

Founded on
WINDS values.....
Creative Minds
Shaping the
Future

The **Single Source** for all
your **Business Needs**



C O R P O R A T E
GROUP PROFILE

www.windsinternational.com

TURN Key
SOLUTIONS
COMPANY 

The logo for TURN Key SOLUTIONS COMPANY. It consists of the text "TURN Key SOLUTIONS COMPANY" in a sans-serif font. To the right of the text is a red icon consisting of a stylized letter 'C' with an arrow pointing upwards and to the right, suggesting a cycle or a key solution.

CORPORATE
GROUP **PROFILE**

TABLE OF Content ▶

WINDS GROUP

| | |
|--------------------------------|----|
| CEO Message | 02 |
| Who we are? | 03 |
| Winds Vision, Goal, Philosophy | 04 |
| Winds Core Value | 05 |
| Aims & Objectives | 06 |
| Winds Team | 07 |

WINDS INTERNATIONAL

| | |
|---|-------|
| Services | 08-35 |
| - Our Process | |
| - Architectural, Interior & Construction Services | |
| - Technical / Contracting Services | |
| - Graphic Design Services | |

WINDS INTERNATIONAL TRADING CO.

| | |
|-----------------------------------|-------|
| Products | 36-62 |
| - Information Technology Division | |
| - General Order Supplies | |
| - Security Integrated Solutions | |
| Our Strategic Partners | 63-64 |

CORPORATE
GROUP PROFILE

WINDS GROUP

CEO message

I want to take this opportunity of introducing WINDS INTERNATIONAL Group Of Companies. WINDS INTERNATIONAL is a turn-key, the single source for all your business needs; we work towards finding solutions to the most demanding situations, thus adding values at every stage. Our staff oversees projects from design to furnishing, from inception to completion while portraying corporate integrity and fiscal responsibility. All members of our team are committed to performing the highest level of quality artistry. We have worked hard to earn our reputation, by paying more attention to details and uncompromising commitment to quality.

Every client's interaction with our company is a quality experience. This commitment is the essence of our corporate character and reinforced with every step in our project development process. From the initial consultation to the work-in-progress, right down to the final stages of the finished project, you will experience our dedication to exceptional service levels and expert artistry.

Our brand name is our reputation, and we will never cut corners or do just enough. To us, your investment is as crucial as it is to you – our valued customer.

Muhammad Shahzad

Chief Executive Officer
Winds International Group of Companies



CORPORATE
GROUP **PROFILE**



who we are?

WINDS INTERNATIONAL was established by a group of professionals, combining their experiences in corporate, commercial and residential segments. This group covers expertise in designing, engineering, constructing, building, furnishing, providing all kinds of IT, Office, Security Equipments & Integration types of equipment and supplies as well as industrial solutions.

Our business plan is simple; nullify client's frustration by locating and managing various trades proving to be the single source of all possible services required.

WINDS INTERNATIONAL is exceptional by design. We offer a variety of services and products tailored to the needs of our clients. Initially, each client's project is assigned to one of our project manager who consults with the prospective client to thoroughly understand the scope of work and size of the project to assist them with planning and space evaluation process. The Project Manager then guides the prospective client towards developing a realistic budget based on the project requirements, phases and completion date.

The management and staff of WINDS INTERNATIONAL bring to our client's hands-on experience, a broad base of information, far-reaching trade contacts and a willingness to expend a lot of up-front effort to gain their confidence and understand the requirements of the project. The staff continually interfaces with leading and cutting edge architects, designers, integrators and contractors to keep abreast of all changes and improvements within their respective fields. The company has built a formidable reputation by providing uncompromising customer service and by utilizing the finest designers, contractors, labourers, artisans and installers within any region and territory. There is constant collaboration with each client to ensure a project's timely progression and maintain the customer's satisfaction not only with WINDS INTERNATIONAL but also with tradespeople and subcontractors.

At WINDS INTERNATIONAL, we realize that business cannot always be done during regular business hours; therefore, we are flexible in scheduling work and installations to comply with our customer's schedule. For the same reason, we import certain items like furniture, electronics, security equipment and a specific range of IT & office types of equipment to maintain readily available stock for our clients.

By the grace of Almighty ALLAH, right now we are servicing partners of salient market leaders in telecommunication, NGOs, private industry, public sector and financial institutions.

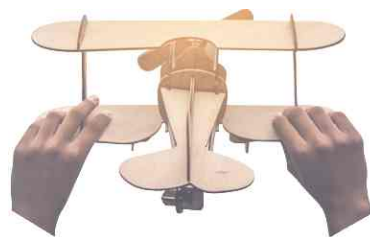
CORPORATE
GROUP PROFILE

winds vision

To attain recognition as the market leader for quality in our region and emerge the preferred choice for all our clients and employees, present and in the future.

Imagine a world where all your technology functioned seamlessly. Imagine a world where all your business needs are met by one company, integrated to Perfection.

Imagine a world where your customers are billed accurately for all your services in a straightforward process.



ONE NETWORK
COMPANY
SOLUTION



Philosophy

Our philosophy is to focus on long-term business rather than striking one-off deals. We are proud that most of our business comes from repeated customers. We would also like to assure you that we are a reputable company in the local market as well as all over Pakistan. All of our customers are satisfied with our quality services.



winds goal

Add value at every stage in the design, construction and project management by implementing the practice of delivering excellence corporate culture to benefit in the long term association.

CORPORATE
GROUP PROFILE

winds core value



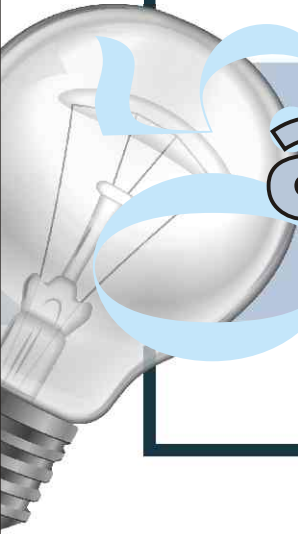
Customer satisfaction- is the cornerstones of our success- We strive to exceed customer expectations and dedicate time and effort to quality service to all our clients.



Committed to innovation- We consider learning and development continuous process; consequently, we adopt state-of-the-art technology and practices to enhance the efficiency of our operations constantly.



Great teams build great companies- To attract, develop and retain the best talent; we have created an individual environment growth is the foundation of our company's growth.



Aims & Objectives

Winds International is a leading Pakistani company that specializes in Corporate, Commercial, Residential Design to Construction and Providing all Kinds of IT and Office Equipments, Security Equipments and Integration.

It aims to cover the needs of Private and Public Enterprises, as well as specific Vertical Sectors, and to provide superior quality "Turn-Key Solutions".

The objective of Winds International is always to provide, to its customers, superior quality technology products, services and solutions to maximize productivity and competitiveness.

WINDS CUSTOMERS

The company approaches the market through the sales department, consisting of Account Managers specialized in all industry categories. Winds International focuses on customers in the Private and Public sector and offers complete Turn-Key Solutions.

Each sector is approached by the sales force, consisting of specialized Account Managers that focus on each market separately & can provide specific solutions for each industry, applying a "customer-oriented model" to each answer.

The classification of customers consists of specific criteria including turnover, and company size, but more importantly, the technology "needs" of each industry. At the same time, the company approaches the market through Public Relations and Marketing, which consist of promotions, events, advertising and direct marketing. Moreover, the website can be found at www.windsinternational.com



OUR COMMITMENT

"While it is important for us to know our Clients' business well, it is MOST important that we know their people better.

" We believe that delivering our promise and commitment of Products and service excellence to our clients is the key to our success.

Our consultants listen to what you say – and work with you to understand the problem before suggesting a solution. Project goals are clear and realistic, and everyone agrees on the way ahead. Effective knowledge sharing makes life simpler instead of more complicated



CORPORATE
GROUP PROFILE

winds team



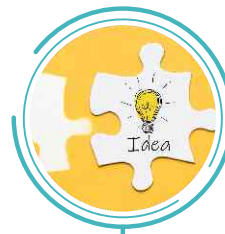
The management philosophy is based on responsibility and mutual respect. People who work at Winds International want to work at the Organization because it has an environment that encourages 4Cs:



CONCEPTS



COMMITMENT



CREATIVITY

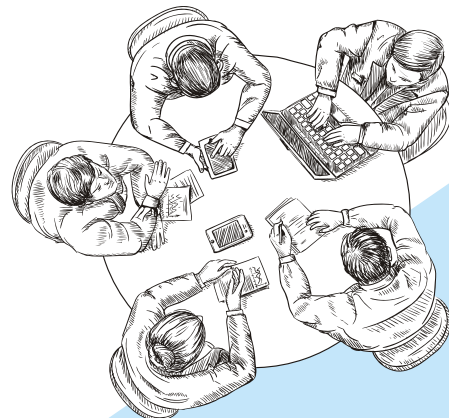


CUSTOMERS

With a focus on client needs, the team envisages offering of custom and general modules / consultancies designed to suit the specific requirements. It is acknowledged that input from the clients will help shape the future direction of the WINDS INTERNATIONAL. Not only will this improve the flow of ideas and service but will also help determine the future needs of client groups resulting in enhanced products appropriate for the geo-social environment prevailing in the program areas. Our culture is "Relax looking Hardworking Environment", which pushes the entire workforce to develop an energetic, competitive and absorbing environment that shall reflect the exigent work done made quickly concluded assignment.

OUR TEAM

Winds International is performed with a qualified team around the clock for your support and further needed assistance, advice and help in choosing the relevant solutions that fit your application need. As we are well known in the speed of support, innovation in creation and efficiency in work make our distinction in the security field.



CORPORATE
GROUP PROFILE

OUR
SERVICE
IS THE
DIFFERENCE

PAGE 35

SERVICES

We believe on long term benefit. WINDS INTERNATIONAL is a turn key, a single source provider for all your business needs whether it's a small corporate needs or major build-out. We serve you with our additional services by providing the product needed by your company to function and after sale services as well. ▶▶

GRAPHIC
DESIGN
DESIGN
DESIGN
SERVICES

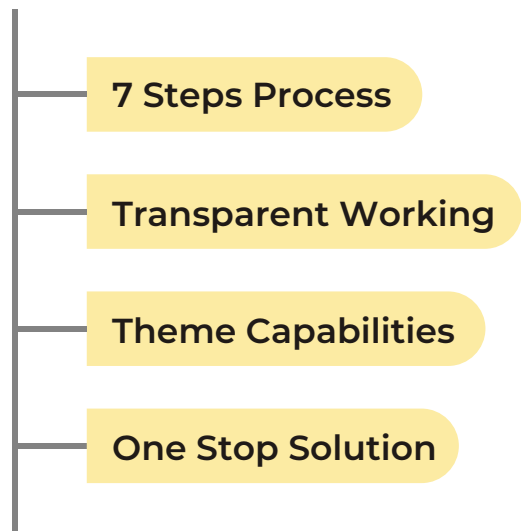
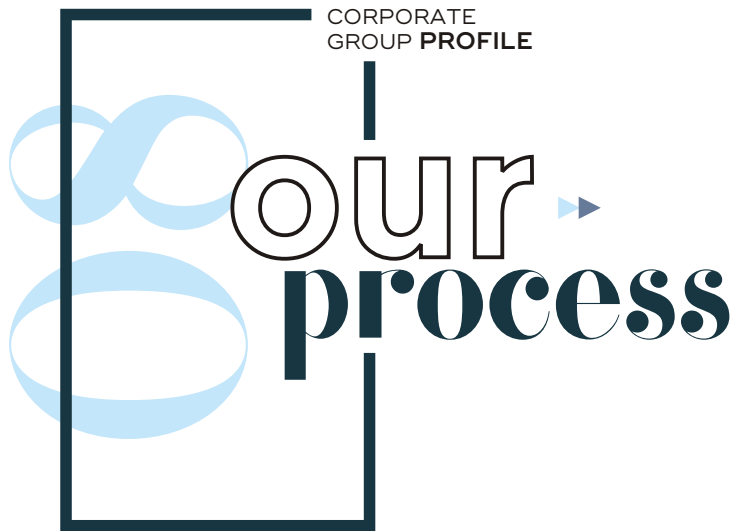
WINDS INTERNATIONAL

Architectural, Interior & Construction Services

PAGE 22 **Technical /
Contracting Services**

| | PAGE |
|-----------------------------|-------|
| ▶ Our Process | 09 |
| ▶ Residential Design | 13-14 |
| ▶ Landscape Design | 15 |
| ▶ Office Design | 16-17 |
| ▶ Commercial Design | 18-19 |
| ▶ Construction & Renovation | 20 |
| ▶ Construction Sets & Plans | 21 |
| ▶ Project Management | 21 |





7 STEPS PROCESS

As a result of the amalgamation of the 7 channelized stepwise processes, we have succeeded to establish an unmatched reputation in the business of architectural and interior designing. Those steps are listed down below:-

01- Deciding the Scope of Project

Winds Architectural and Interior deals in ultra-luxury architectural and interior designing, and thus our initial step focuses on determining how luxurious do you want your interiors to appear. We are much ahead of times, and definitely, you can expect heightened scope from us.

02- Research Design Options

We carry out high-end research work consistently to come up with the out of the box design ideas. Through years of experience, we have gained expertise in creating stand-alone architectural and interior design options for our clients. This step proves to be amazingly beneficial for the clients as their entire project gets imbued with uniqueness.

03- Generate Master Design Plan

Winds elaborately work on the master design plan. The procedure begins with the crafting of an accurate layout plan and is followed by deciding the wall designs separately. The furniture is discussed and finalized as per the desire of the client. At the end of the procedure, a 3D view of the entire design is presented to the client in order to help them visualize what precisely the complete interiors will look like.

04- Discuss Estimates of Designing Cost & Modify Design as per Budget

Winds Architectural and Interior believes in extensively transparent working and there no hidden charges in the budget. After the final presentation of the 3D designing, our financial experts thoroughly chart out the expenditures to be made throughout the designing project and hold formal meetings for your consent. If needed, we modify the design following your budget and thereby free you from the unnecessary financial worries.

05- Select all of the Finishes

We deliberately keep your priorities as our prime concern. Therefore we discuss each finishing to be done for flooring, walls, etc. with you before the initiation of the designing process. To present you with something which you would love to flaunt is our aim and we efficiently work for it.

06- Start the Designing

After taking all the required permits from you, we begin working delicately to bring the design alive and to achieve the best results for you. Winds Architectural and Interior intends to maintain its most crucial element of luxury throughout the designing.

07- Completion of the Project

We employ proper supervision for every aspect of the project and regularly monitor the output. We coordinate correctly with you and keep every design-related demand of yours in constant consideration. Our completed projects hold assurance to bring a smile across your faces once they are handed over to you.

TRANSPARENT WORKING

We have a very professional and transparent system of working. All designs are approved by the client beforehand, and there are no hidden costs. During the entire work, process client is kept in the loop, with proper presentations and explanation. Our presentation style involves 3 D & 2 D

visualizations, which gives the exact idea, of the final look of the room. All expenses are discussed beforehand. Unlike other firms, we do not quote higher prices on sourced materials. We try and keep within the budget assigned to us, and all our clients are given equal importance.

THEME CAPABILITIES

If you are considering having a theme for your restaurant, office, or kid's room, Winds Architectural and Design Services is your ultimate stop shop. All over the world, having a theme for your restaurant or commercial establishment is becoming more and more popular, and Pakistan is no different. Other countries have some bizarre themes, like the Toilet themed restaurant in Taipei or Dinner in the Sky restaurant of Belgium. Pakistanis might not be as adventurous in accepting wild themes as our foreign counterparts. Still, most people are bored with the mundane and want to have a different experience in interior designing.

We specialize in designing theme restaurants of international standards. Our restaurant themes will inspire and amaze you and are bound to increase your business manifold. Theme designing by Winds Architectural and Design Services has won many accolades, as well as design awards. Our restaurant themes include Jungle theme, Village theme, Hard Rock Cafe, Pirates theme, etc. We create amazing theme rooms for children. These themes include Barbie theme, Disney theme, and themes on other popular animation characters, and movies.

ONE STOP SOLUTION

To integrate all the interior design related services and to present them in the most impressive way is the most exotic feature of Winds architectural and Interior Design Services

We are the experts in luxury architectural and interior designing and exhibit equally outstanding and ultra-luxurious work in

- » Residential / Commercial Architectural Design
- » Home Interiors
- » Office Interiors
- » Restaurant Interiors
- » Showroom Interiors
- » Hotel Interiors
- » Play School, Institutes, Colleges, etc.

We can get materials sourced from any part of Pakistan or around the globe available for you and can provide you with the best-designed plan layout, 3D design, etc. We have adept professionals on board with us who can offer you solutions for each aspect of designing and at the most economical rates.

WINDS is the only destination on which you can rely to receive a one-stop solution when it comes to the case of luxury interior designing.

TECHNOLOGY INTEGRATION

Being the most tech-savvy interior designers in the industry, we can design a tech-powered place for you. Winds architectural and Interior Design Services has the unique

advantage of being one of Pakistan's premier technology consulting firm specializing in designer technology infrastructure. We have the top luxury architectural/interior designers in Pakistan, who will design your place with a seamless blend of technology and luxury. No wire hanging, no extra cables or cords, everything will be hidden. You will see the beauty of it. Every place, room, office that we design is technologically empowered.

We offer various techno powered design elements.

- > **Office & Home automation systems:** When Winds architectural and Interior Design Services a place, they incorporate home automation system or at least design your site, so that it can be installed even at a later stage, for the ultimate luxury experience.
- > **Mood & Theme lightings:** Wouldn't you love it, if the room automatically lightens up when you enter, or the lightings change according to your mood and time of the day. Winds International Group can design your dream place, embedded with these beautiful features.
- > **Integrated digital security systems:** Nowadays when security is a significant concern, Winds architectural and Interior Design Services your place, so as it is luxurious and safe as well, through installing integrated digital security systems at your sites like hi-tech alarms, retina scan or fingerprint scan.
- > **Integrated digital surveillance solutions:** You should be aware of who comes and goes out of your place. FDS group provides you with the ultimate integrated digital surveillance solutions like network video recording, speciality cameras or video analytics.
- > **Integrated blockage free Wi-Fi solutions:** Wi-Fi blockage is a significant problem that the corporate world is facing. WINDS makes it easy for you, with its integrated jam-free Wi-Fi solutions.
- > **Smart Conference rooms:** Winds International Group can design a fantastic conference room equipped with Video Conferencing, Projection Systems, Smart Boards, Tablets, and Room Automation etc.
- > **Professional Home Theaters:** Winds International Group can design a fantastic conference room equipped with Video Conferencing, Projection

Systems, Smart Boards, Tablets, and Room Automation etc.

- > **Command Centers:** Winds International Group can even design a command centre at your place, which will help you monitor the environment and be ready to act quickly and decisively to a threat, to that environment.
- > **Integrated Technology Designs:** WINDS can design your place that is laced with luxury and is technologically empowered, not only one but many different technologies through our integrated technology designs.

INTERNATIONAL SOURCING

Imported Designer Furniture & Decor

Gone are the days when accessibility to high-end materials from across the world was a significant constraint when it came to aesthetic designing. Winds International Group prides in breaking all geographical barriers to make the cream of everything round the globe enter your space.

WINDS' well-travelled couture of premium interior products and au courant accessories make it the best interior designing company in Pakistan and abroad. Our meticulous explorations to acquire unique objects d'art from every corner of the world enable us to make your space look stimulating.

Be it wooden hut gazebos from Indonesia, rococo furniture from France, gold plated chandeliers from Syria, fossil table from Morocco or Swarovski crystal mantel clock from Italy, you name it, we bring it! When it comes to designing your place with meticulous mélange of international pieces, WINDS loves to make the world a small place.

Whether it's your home, workplace, restaurant or hotel, we at Winds Architectural and Interior Designs offer a frolicking array of overseas materials through our strategic international sourcing. So next time when you think of a pair of cotton duck upholstered ottomans in your living room or a Noguchi table in your office reception, think of us!

The **Single Source** for all
your **Business Needs**



Residential Design



Office Design

Landscape Design



Commercial Design



RESIDENTIAL DESIGN



"Your home is arguably the most important building you inhabit. It is where you live your life. It is where you raise your children, your pets and your plants. It is the place of comfort you return to at the end of the day. It is a repository of memories and the generator of dreams."

It follows that designing your home is a very personal act and choosing the right architect to assist you in that process is incredibly essential. Naturally, the architect needs to be qualified to do the job, but it also needs to be able to understand you as a person. They need to be a good listener and know to ask the right questions. They need to respect the reality that you know how you live your life but also be willing to challenge you to imagine ways you could live your life better.

PRE-DESIGN

The first thing we need to do is better understand you as a person and as part of a family. We like to meet you at your home so that we can see how you currently live. This first conversation is mainly about the "big ideas" that will drive the design of your house.

Of course, we'll need to know how many bedrooms and bathrooms you want, but we also want to come away from this first meeting with an understanding of what kind of place you want your house to be. Although it's easy enough to define the functional requirements of how you want your home to work, sometimes it can be more challenging to describe how you want your home to feel.



It's also crucial that we see where the new home or addition will be built. As well as understanding the conditions at play on the site, we'll also need to document these existing conditions. If you have existing drawings or surveys, this can help, but often we need to spend a few hours gathering the dimensions and photographs we'll need to move forward.

CONCEPT OPTIONS

After we've listened to your needs and dreams, we're ready to start designing. And what we do when we design is drawn. As we sketch, we'll explore various ways your home could be organized and positioned on its site. Many of these concepts won't be a perfect fit, but some of them will show promise and those we will develop into a series of Concept Options that we will present to you.

Even when there is an obvious solution to your particular design problem, we've found that exploring alternate approaches often informs and improves that initial design. What is more, visualizing something that doesn't exist can be difficult. Having a series of real alternatives to think about and discuss provides everyone with a vocabulary to discuss what works and what doesn't.

To move onto the next phase, a single design direction will need to be identified. Usually, an available option will reveal itself to be the preferred direction although sometimes a hybrid of multiple schemes will be combined to create a fourth "Frankenstein" option.

SCHEMATIC DESIGN

Once a design direction has been identified, there will still be plenty of work to be done. We'll begin to flesh out the rough sketch of the concept option into something that is



more refined and real. While doing this, we'll also integrate any comments and changes you have requested into the developing design. We'll also review local codes to permit procedures so we'll all know what to expect moving forward.

The ultimate goal of this initial design phase is to create a Schematic Design Set that is a set of drawings that define in some detail the state of the design. This set of drawings will include dimensioned and labelled Plans, Elevations and Sections that a Contractor can use to develop an initial estimate of the construction cost of the project. You can also think of the Schematic Design Set as a snapshot of where we are in the process. Although there will still be time to make adjustments as we continue to move forward, for the most part, the direction of the design is now fixed.

DESIGN DEVELOPMENT

Even if the design is fixed, there's still plenty that needs to be done. Although we'll be communicating less with you during this phase since the big moves of the design has by now been approved, we need to begin making everything real. Dimensions will be verified, and construction and material details will be developed to allow for your house to be built as imagined. If a contractor has been selected, we'll also have regular discussions with them about how they would like to approach specific details and what documentation they need to build the project.

The final deliverable of this phase is the Design Development Set. Like the Schematic Design Set before it, this series of drawings is a point within a more extensive process and can also be thought of as the halfway point in the completion of the final Construction Document Set. As such, it allows you one last opportunity to tweak the design before things are finalized. If the process has worked as intended, these changes should be minor. More significant alterations can still be accommodated but may increase the time needed to complete the design.

CONSTRUCTION DOCUMENTS

With the approval of the Design Development Set and the integration of and subsequent comments, we are ready to complete work on the Construction Document Set. This robust series of drawings is essentially the set of instructions the Contractor needs to build your house. We also provide a set of specifications which are written descriptions of the materials and artistry the project requires. Once all this information is complete, the Contractor will have enough information to provide a final construction cost and begin work on building your home.

CONSTRUCTION OBSERVATION

Once the project is under construction, the Contractor will need to have questions answered about the intent of the design, and it's a good idea to have someone knowledgeable about construction acting as your representative on the site. From time to time, a Contractor will suggest a change to the design to save money or allow the project to be more easily constructed. Sometimes these are good ideas that make the project better but often they have unintended consequences. It can be helpful to have someone familiar with the design acting on your behalf - that's where our Construction Observation services come in handy.



LANDSCAPE DESIGN



WINDS landscape designers and planners are a Pakistan home-grown company that specializes in landscape garden design and landscape architecture and environmental planners. We have undertaken numerous projects, ranging from public parks, waterways greenery, park connectors and tropical homes landscape gardens.

- Parks & Gardens
- Hotels & Resorts
- Commercial Landscape Projects
- Private Home

OUR LANDSCAPE DESIGN PROCESS

INITIAL CONSULTATION

Our landscape architects/designers will meet you onsite or in our design studio to establish a landscape design brief. Consultations take approximately 30 minutes and include, design advice, ideas on areas within your garden, as well as: soil, planting advice and selection, construction advice, such as structures, fencing, decking, pools, retaining walls, paving, drainage, irrigation. Consultations do not include sketch drawings. After we have met, we would then provide you with a detailed design fee proposal outlining the scope of works discussed for your consideration.

SKETCH DESIGN & BUDGET

Upon acceptance of the design fee proposal, the first stage is Sketch Design. Here we produce a sketch of the proposed landscape, images and items (from past projects) that would fit within the landscape and an associated itemized budget (based on the initial available budget) that we can work through and refine to bring it into line with where it needs to head.

CONCEPT DESIGN & QUOTATION

Based on comments and outcomes from the sketch design and budget meeting, we rework the design with further

details and 3D perspectives to design provide an excellent understanding of the overall project and to bring the budget to a lump sum fixed quotation. If required, we can take care of Planning Approvals if necessary in this stage.

DESIGN SUPPORT

Where required, our designers remain involved in the background of our construction projects preparing drawings for engineering and building licence items within the TDL scope. Planting, Lighting and as constructed irrigation plans also fall within this stage.

INSTALLATION

Once your design is complete, our experienced construction teams take on the role of ensuring the vision of the proposed design is brought to life during the construction or build process. Our construction teams have a wealth of experience in the fields of landscape construction and horticulture and are committed to delivering the highest standard of work on every project. You can rest assured that no matter, how many hands are building your project, you'll only ever deal with one point of contact. A construction supervisor who oversees all aspects of your project to ensure every element is delivered on time, on budget and above expectation.



OFFICE DESIGN



“We design healthier,
more human workspaces”

WINDS INTERNATIONAL

We share our clients' commitment to the preservation of our natural resources. Our designs balance human needs, economic imperatives and environmental stewardship. We believe that strategic design solutions which enhance well being not only create value in the workplace but help to attract the best talent and keep your existing workforce healthy and engaged.

Winds team delivers creative interior design solutions from Small to Extra Large Enterprises establishments. We focus on conceptual interior design, renovation as well as project management for Office interior design, works. We strive to create quality interiors design work and a total solution with our functionality expertise and skills.

With our sincerity, we will provide the best possible assistance and give the most professional office interior design advises to our client while designing your workspace and we will always be involved with you and work together as part of the team.

As an Office Interior Design consultant, we are firm in our belief to give our client the advice and service possible. Client Satisfaction constitutes a significant part of our company philosophy.



SPACE TRANSFORMER:-

We will transform your workspace with a touch of our little magic comprises of conceptual, layout plan and versatile system furniture.

INTERIOR PROFESSIONAL:-

We help to define our client's needs by proposing a total solution of space planning, designs, project management as well as regulatory submissions.

SERVICE & QUALITY:-

As a manufacturer of office interior design furniture, we always provide robust after-sales services and maintain a strong relationship with our clients.

DESIGN INTELLIGENT:-

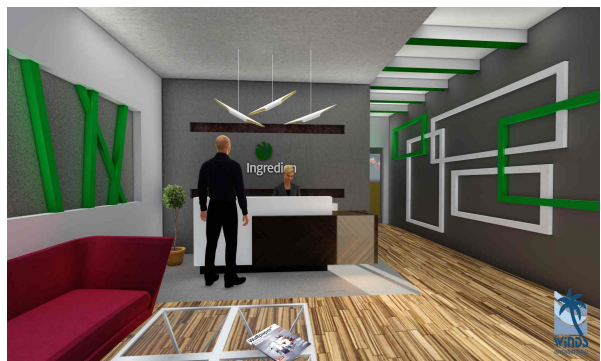
Apart from aesthetic appeal, we also emphasize on functionality and practicality as a "Must have" element in our design stage.

ALWAYS ON TIME:-

Systematic, Willing, Intelligent, Fast & Timely! are traits that best describe WINDS as we ensure the smooth hassle-free transition.

CUSTOMER RELATIONSHIP:-

We believe that friendship is always essential if you ever need our help and advice; we are just a call away.





WHAT WE DO

DESIGN CONSULTANT:-

- > Space Planning
- > Office Interior Design
- > Project Management.

INTERIOR FURNISHING:-

- > Partition & Glass Works
- > Ceiling Design Works
- > Hacking & Tiling Works.

M & E WORKS:-

- > Electrical Works
- > Fire Sprinkler Works
- > Air Conditioning & Plumbing

PROJECT MANAGEMENT:-

- > Cost Budgeting Control
- > Site Coordination
- > Design & Build Management.

FURNITURE WORKS:-

- > Office Furniture
- > Custom Made Furniture
- > Chairs & Sofa.

SOFT FINISHING:-

- > Carpet & Laminate Flooring
- > Wallpaper Works
- > Window Blinds & Curtains.

SUBMISSION WORKS:-

- > Structural & Fire Submission
- > M&E Submission
- > Submission to Management.

RENOVATION WORKS:-

- > Reinstatement Works
- > Protection & Hoarding Works
- > Hacking & etc.

MANUFACTURER:-

We are manufacturer and supplier for all kind of system furniture from home to office interior design use.

Furniture is directly manufactured and imported from our neighbouring country base on our interior design requirements; each product has their individual style and sizes to directly suits client office interior design needs. We select only the most suitable colour and material that suits the company image and branding. Whether it is a standard work station or custom made cabinet you desire, we can make it happen.

As a manufacturer, we take care of your needs from quantity to quality. As our client and partner, you can be assured to receive continuous service and support from our team, ranging from after-sales support or to an additional table or chair you may need.

WHY MANUFACTURER:-

Instead of purchasing furniture off the shelf, we built and create exactly what you will need. We are confident that you will be satisfied with our factory price and quality.

We hold a wide range of office furniture and chairs with different colour selections for your office configuration. We have our professional team of the installer and lead time for delivery of furniture & chairs always within your expectation.

We also assist in office lay-outing and calculation of headcount for your current usage and future expansion.

Let us know your concern now ...

COMMERCIAL DESIGN

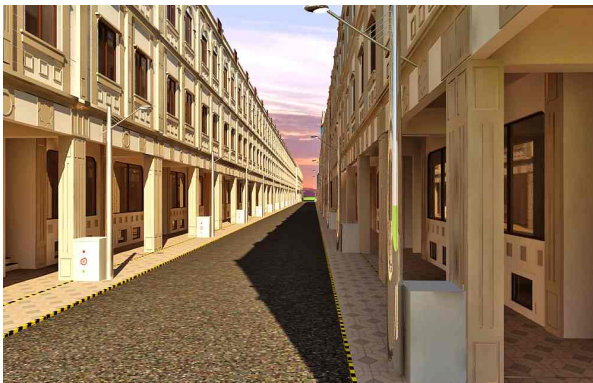
COMMERCIAL ARCHITECTURAL SERVICES

The scope of services provided by Winds Architect & Interior Design is broad in range and depth. These vary between relatively small and simple structures to projects of the most significant size and complexity. The range of types of projects undertaken includes academic, research, performing arts, sports and recreation, library, exhibition, healthcare and residential uses.

Clients' needs and aspirations are the foundation for the services we provide. As a consequence, much preliminary work consists of establishing both those aims, which in turn are translated into practical solutions and then celebrated with an architecture that accommodates all factors.

MASTER PLANNING & URBAN DESIGN

The aim of master planning is to utilize each building component as an incremental addition to a larger whole. In other words, each building must satisfy two objectives – one to accommodate its particular function to advantage and the other as a contributor to an aggregate that is greater than the sum of its parts. Provisions for growth should be those that add to the entirety and enhance the form of the complex.



SOCIALLY RESPONSIBLE DESIGN

It is the inclusion of a social dimension that elevates buildings to architecture and planning to urban design. It is also the creation of a symbiosis between buildings and the open spaces they shape that ensures their durability. Most of all, the available space should not be decorative, but perform useful roles as meeting, performance, ceremonial or a host of other public functions.

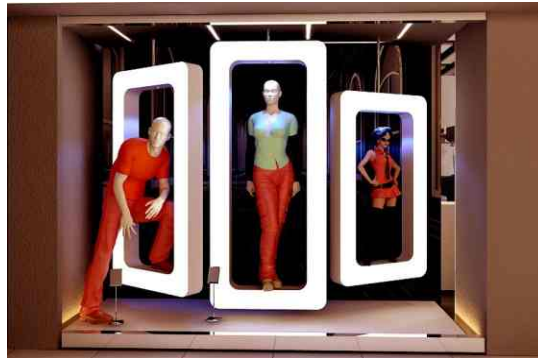
COMMERCIAL INTERIOR DESIGN

There is, in our view, a symbiosis between the architecture of the exterior and that of the interior. This is not to equate the two in regard to their contexts, which clearly are different, but to relate them in terms of aesthetic consistency. Both are in service to a greater goal, which is to comprehensively serve the practical and symbolic aims of the building while catering to very different environmental conditions.

SUSTAINABLE DESIGN

As architects, we are in a position to facilitate change and set an environmentally responsible agenda to reshape the design process. Winds Architect & Interior Design have a design mandate to use less of the world's limited





resources, and a responsibility to ensure we play a significant part in the creation of sustainable projects. We see sustainable design as a driver, as an integral aspect of the creative process – equal to user satisfaction and contextual response.

Constant innovators of sustainable design solutions, Winds Architect & Interior Design pioneered the integration of bio-filter wall technology in buildings, were early adaptors of geo-exchange technology to reduce energy consumption, and promoted grey water recycling long before building codes recognized the benefits.

Our insight on the impact of sustainable design continues to evolve as we challenge the norms of energy provision and utilization in projects. Through collaboration with our clients and consultant partners, we seek to offer innovative solutions to address the principles of social, economic and ecological sustainability.

FEASIBILITY STUDIES

This is one of the services that explore the means to deliver clients' needs and aspirations. A thorough analysis of all relevant factors to be taken into account is made in order to test the extent of constraints, the potentials of the site, space program, available building technology, sustainability and the means of utilizing the budget to maximum effect.

FUNCTIONAL PROGRAMMING

Most functional programming exercises merely establish the quantitative amounts of space required and perhaps the relationships between program components. This, in our view, is only the first step in establishing a space program. To achieve a result that is greater than the sum of its parts requires the inclusion of the qualitative aspect of the space program: the character of the place is as important as its physical dimensions. Qualities of light,

proportion, and materiality, are among the factors that ultimately contribute to a building to facilitate that which otherwise would be only functional in its most basic elements.

BUILDING INFORMATION MODELING

Building Information Modeling (BIM) is 3D technology designed to engage a wide range of users, including architects, consultants, contractors, constructors and clients in a model environment. In addition to generating three-dimensional representations of building schemes, BIM incorporates an extensive database that allows coordination of all building elements through a single platform.

The program allows the coordination of all construction systems; it provides functional operations tracking and cost control monitoring, ease of information exchange between consultants, clients and authorities with building construction jurisdiction. Project coordination in three dimensions provides all concerned with the ability to monitor project progress and thus allow any issues to be addressed early in the process, reducing the opportunity for cost overruns during the construction period. The office employs this system as appropriate to each project we undertake.

RESTORATION, REVITALIZATION & RENOVATION

Bringing new life and purpose to old buildings is a challenging and rewarding task, not to mention a fundamental pursuit of sustainable design. We have uncovered soaring wood-beam ceilings in a college library, transformed a derelict brick factory into a centre for sustainable cities and are repurposing a textile mill into a Fine Arts faculty. By reinterpreting buildings for contemporary purposes, we keep alive a vital link with the past and blend new and old in the fabric of urban life.

CORPORATE
GROUP PROFILE

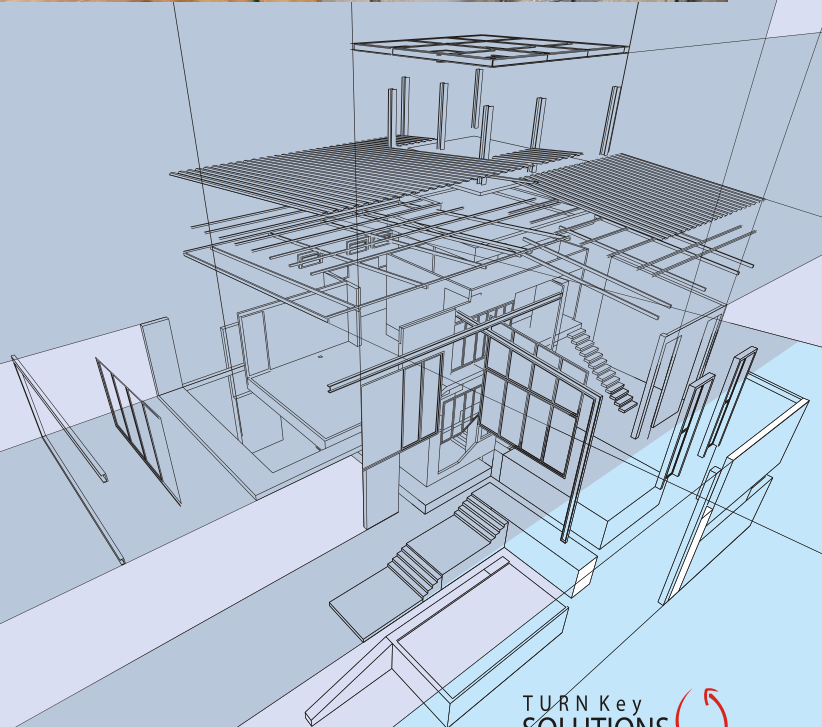
CONSTRUCTION & RENOVATION

“Construction and Renovation are the art of organizing and directing men and Controlling the forces and materials of nature for the benefit of human race.”

(Henry G. Stott 1907)

WINDS INTERNATIONAL

WINDS INTERNATIONAL proudly boasts of having a team of employee's and Project Managers that have been integral to the planning and construction of a wide array of projects. WINDS INTERNATIONAL construction companies have built or renovated space ranging from small office renovations of a few hundred square feet and the build-out of the small office to larger corporate projects greater than 20,000 square feet and the "from the ground". WINDS INTERNATIONAL takes great pride in helping a client meet the goal of transforming raw space into a vibrant, working environment reflecting the desired image and corporate culture. As the "single source for business needs", WINDS INTERNATIONAL can handle all of the following aspects of a Construction Plan:



CORPORATE
GROUP PROFILE

CONSTRUCTION SETS & PLANS ▶



It is almost a certainty that without the proper set of plans, a project is doomed to delays and cost over-runs. Once a Construction Set has been done by an architect the client can begin to feel confident that they are getting real information on budget questions, space allocation questions and info on other important aspects of a project. Most Construction Sets should include but are not limited to Demolition Plans, Construction Plans, Reflective Ceiling Plans, HVAC Plans, Power and Signal (Tel. & Data) Plans, Plumbing and Sprinkler Plans, Fire and Safety Plans, Furniture and Finish Plans. In some cases, a Construction Set can be 5 or 6 sheets, and in some cases, they can be as thick as 30-40 sheets. An architect from the WINDS INTERNATIONAL network can play an essential role in the creation of these all-important documents.

WINDS INTERNATIONAL



The management and staff of the WINDS INTERNATIONAL bring to our clients' hands-on experience, a broad base of information, far-reaching trade experience and a willingness to do "whatever it takes" to help guide our clients from the inception to the completion of their projects. The approach a WINDS INTERNATIONAL Project Manager takes to a particular task is unique in the field. Because we utilize a "single source-team concept", the client does not just engage an individual but retains one of our managers who can work with confidence knowing that he/she is supported by a group of WINDS INTERNATIONAL professionals, possessing a depth of knowledge in every aspect of corporate and institutional design, construction, furnishing and flooring. The support of this team enables the WINDS INTERNATIONAL Project Manager the ability to offer a "turnkey" approach to most projects and when necessary, isolate any single parameter of a project and offer professional assistance leading to the successful completion of that aspect of a project.



PROJECT MANAGEMENT

CORPORATE
GROUP PROFILE

TECHNICAL / CONTRACTING SERVICES

Winds International have a highly qualified, efficient and motivated team of Engineers and skilled technicians in a fully computerized environment for assuming total responsibility for Building services and maintenance in terms of Integrated Management and

Engineering support. Our services are all carried out by skilled, engineers and tradesmen and as a company has two morals, customer satisfaction and professional quality work. We can provide a quality team of tradesmen to carry out one off repairs or complete building projects. We pride ourselves on being competitive on price without it impeding on quality. We look forward to your favorable consideration and wish to be associated with your esteemed organization. Apart from these, we have successfully undertaken various Contract jobs and Contract Manpower in reputed business houses.

▼
**Air-Conditioning,
ventilation &
air filtration
Systems
installation &
maintenance**

23

▼
**Electromechanical
Equipment
Installation and
Maintenance**

24

- ▶ **Plumbing & Sanitary Contracting | 25**
- ▶ **Floor and Wall Tiling Works | 25**
- ▶ **Painting Contracting | 26**
- ▶ **Carpentry & Flooring Contracting | 28**
- ▶ **Partitions & False Ceilings Contracting | 30**
- ▶ **Electrical Fittings & Fixtures services | 31**
- ▶ **Cladding Works (which shall include carrying on of all activities as are related or ancillary thereto) | 32**
- ▶ **Graphic Design Services | 35**

AIR-CONDITIONING, VENTILATION & AIR FILTRATION SYSTEMS **INSTALLATION & MAINTENANCE**

Services Division:-

Our Service Division provides an ad-hoc breakdown, planned maintenance and compliance inspection services to our clients, whilst providing installation and commissioning support to our projects and products divisions. Our compliance services are designed to provide customers with a range of support to help them meet their legal obligations and to ensure assets and equipment comply with the ever-increasing demands of various Residential, Corporate, Industrial, Commercial and working environment legislation. Crucially, this includes the audit and review of all statutory HVACR responsibilities, a compilation of reports and the making of recommendations.

HVACR equipment installation, commissioning, maintenance and system integrity are core to our services offering and, as specialities in our field, we offer our customers the assurance of high-level expertise. We also provide dedicated campaign maintenance and integrity management services, incorporating systems performance monitoring, ensuring equipments are operating as per the design and operational requirements.

Breakdown & Planned Repair & Maintenance: -

Our team of services engineers and technicians travel across Pakistan, often at concise notice, to assist clients with equipment breakdowns and system failure. They also carry our scheduled maintenance to specialist HVACR equipment that the client's core crew may not be entirely familiar with. The cost of preventing system failure, particularly in warm climates, is far less than the potential consequences arising from such breakdowns, in terms of loss of home/working.

Preventative Maintenance Agreements

Our Customized Preventative Maintenance service is unique to the industry. The Maintenance Service Agreement keeps your system in tip-top shape and helps prevent unwanted service calls. A Preventative maintenance service agreement, will save you money and assure uninterrupted comfort all year round. Each plan is customized to suit your specific system and unique service needs. Plans are available in 1-year, 2-year and 3 year

options.

Installation:-

Our team of installation engineers and technicians are qualified and experienced at installation all components equipment and parts that make up an HVACR system, including; duct work, damper, fan, air conditioners equipments refrigeration plants, electrics and instruments. We specialize in Residential, corporate, Industrial, and Commercial HVACR installation.

Commissioning:-

Commissioning and rebalancing is essential to ensure that systems are achieving their design performance. We perform commissioning and re-commissioning of all air conditioning and refrigeration plants as well as air balancing of ventilation equipment.

Duct Cleaning:-

Regular inspection and cleaning of duct work is a basic requirement of health and safety since spores and micro organisms that grow in dirty ducts can be responsible for respiratory problems. Ducts which have become clogged with debris can also lead to systems underperforming.

Spares Unlimited:-

We have established relationships with a wide variety of major manufacturers enabling us to source large range on engineering equipments and spare efficiently at competitive prices. Spares unlimited also support our repairs and maintenance operations by ensuring prompt



ELECTROMECHANICAL EQUIPMENT INSTALLATION AND MAINTENANCE

Electromechanical Maintenance

Our concept of service applied to electro-mechanical maintenance is recognized by all our clients. Our performance and reputation as a company was forged by know-how of our men and their sense of a job well done. We service all types of electromagnetic devices, whether revolving or static.

How do we maintain?

Maintenance today has become a job for a specialist. With our modern equipment, upto date knowledge, renewed continuously experience. Our technicians are available, competent and qualified. We can offer you a maintenance package suited to your needs.

Mechanical Works, installation, Operation, Maintenance and Technical Support:

We take up the supply & installation of specialized:

- > Chilled Water/air centrifugal
- > Chilled Units
- > Chilled Water Piping
- > Chiller Air Handling Unit (AHU) and Fan Coil Unit (FCU)
- > Split A/C (Ducted Decorative)
- > Package A/C
- > Energy saving system
- > Operating cost-saving upto 50% (electricity, water etc.)
- > Equipment cost-saving upto 50%
- > More than 50% noise reduction.
- > Treated Fresh air.

This division handles installation of new systems, executes the modification of existing units and carrying out overhauling with the sole aim of:

- > Reducing electricity consumption
- > Decreasing the noise level to audible limits
- > Lowering the running cost
- > Usage of environment-friendly coolants
- > Maximizing the cooling capacity



The preparation of technical design, selection and supply of right equipment and installation is part of our daily operations. We are entrusted with several large and medium contracts with reputed customers.

- > Execution supply & spare parts service
- > Repair maintenance technical backup
- > Practical training with a guarantee of executed works for the system:
- > Chiller plant – cooling tower system and its attachments
- > Central Refrigerators
- > Chiller plant overhauling
- > Other utilities

Air-conditioning systems and equipment of all shapes and sizes and capacities from 1 Ton to over 250 Tons are installed for residential, commercial, industrial and marine applications including BMS integration, remote monitoring, electronic controls and related work.

All work comprising duct fabrication and installation (SS and AI for industrial applications, MS and GI for commercial and residential applications), MS , GI, Cu. PVC, ABS piping, insulation with phenolic foam, Polyurethane, PP, FG, Rock Wool fabric material is carried out to required specifications.

Our operation & maintenance services include the following:

- > Facilities Maintenance & Operation
- > Installations of electrical and mechanical Equipment
- > Maintenance and Operation Of (Medical Centers, Hospitals, Airports, Industrial Facilities, complexes, Towers, malls)
- > Mechanical Maintenance
- > Electrical Maintenance
- > Electronic Maintenance

PLUMBING AND SANITARY CONTRACTING SANITARY **INSTALLATION & PIPES REPAIRING**

We provide a well-qualified team of plumbers and plumbing technicians who are capable of solving every plumbing problem and emergency plumbing situations. We install, service and repair a wide variety of plumbing fixtures for kitchens, bathrooms and throughout your Home, Residential, Commercial Building, Industrial and Corporate Building.

Our highly dedicated, trained and experienced staff can solve your issues in an efficient and effective manner. We undertake Water Supply, Drainage, Sanitary Plumbing, Roofing, Gas Fitting, Mechanical Services, Duct Fixing, Back-flow prevention, Split-system air conditioning, etc.

We sell service and maintain:

- > All kind of hot water systems
- > Fire hydrant and hose reels
- ? All types of boiling water units
- > All types of toilet flushing systems
- > All sorts of commercial and domestic gas appliances
- > All types of Faucets
- > Sewerage and storm water pumps

We carry out maintenance of:

- > Dripping taps
- > Blocked drains
- > Burst pipes
- > Gas leaks
- > Sub-floor seepage & drainage
- > Draining flooded basements
- > Water-recycling systems

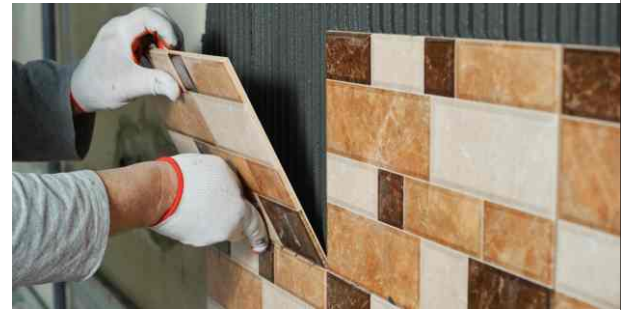


FLOOR AND WALL **TILING WORKS**

Wall and floor tiling refer to the laying of tiles of ceramics, mosaic and natural stone on walls, floors and staircases in houses, industrial and public buildings, Mosque, swimming pools, outside installations and facades to provide protective and decorative finishes. It also includes the construction of small walls and steps from bricks or blocks.

We are able to do Tiles work from diagrams and instructions. First, we measure the area to be tiled and calculate the minimum number of tiles required. Next, they remove any existing covering. They then prepare the surface - leveling the floor using sand and cement, or applying plaster if we are tiling a wall.





We then spread cement or adhesive with a trowel and lay the tiles in the desired pattern. We may have to cut tiles to fit around walls and obstacles. After the adhesive has dried, the joints between the tiles are filled with grouting cement. On large projects, Tile Fixture may work in teams. On smaller jobs, work alone.

In general, the work processes for the wall and floor Tile Fixture include:

- > Reading plans, control materials, equipment and tools
- > Install work site and take care of health and safety
- > Prepare the surfaces to be covered and install blocks
- > Layout, a divide area, prepare quantities
- > Install inside and outside corners including watertight
- > Fix tiles on walls
- > Fix tiles on floors
- > Finishing work

We have to carry out, independently, the laying of tiles to professional standards.

Practical work includes:

- > Follow instructions and safety procedures
- > Select tools and equipment for the practical work
- > **Use specific technical skills when:**
- > Preparing the surfaces
- > Care for accurate measuring and laying out
- > Cutting tiles
- > Fixing tiles
- > Grouting joints
- > Verify the measurements conform to the Test Project (drawings)
- > Fixing, gluing tiles in conformity with work assignments and Test Project
- > Spread glue evenly, regularly
- > Tiles to be aligned and levelled
- > Avoid excess glue
- > Empty spaces, joints to be symmetrical and equal
- > Clear joints and grout in accordance with the prescriptions
- > Empty spaces, joints to be symmetrical and equal
- > Clean tiling work

PAINTING CONTRACTING

Give the interior of your home an easy make over without spending a ton of money. A fresh coat of paint or new colour can spruce up any home and ready it for any occasion. Thinking of Paint Job, but can't afford a complete overhaul? Then keep what you have and add to it. Simply realizing what you have and adding an accent tile makes a big difference and saves you a ton!



We have experienced professionals who can complete any project, interior/exterior, All kind of painting in a timely and respectful manner. We use only the best quality paints and have a large variety of colour samples for you to choose from. We do our best to understand exactly what you want before we get started. At our company, what's important to you is just as important to us. Communication, Knowledge, Respect, Neatness and Honesty is what you will encounter from beginning to end!

With our company, rest assured that our knowledgeable staff will help you in every aspect of your project. From choosing the perfect colour to "set the mood" for dinner, or "brightening up the little one's room", to creating a "calming environment" for those moments, you want to relax and enjoy your night.

When you contact us, we will provide you with a customized Professional Proposal detailing the specifics of your project and how we plan to beautify it. Residential and Commercial, Interior or Exterior no job is Too Big or Too Small for us to handle! The attention to detail remains the same, as does our goal.....100% satisfaction!!!

Our Services

We work hard to bring you the best and most diverse types of services within the painting/contracting industry. Our services include:

- > FREE Estimates
- > Interior and Exterior Painting
- > Waterproofing and Textured Coatings
- > Wallpaper Hanging and Removal



- > Faux Finishing
- > Color Consulting
- > Floor coatings (Residential, Commercial and Industrial)
- > Graffiti Removal and Barrier Coatings
- > Paint Removal
- > Handyman Services (Paints patch or small job etc..)
- > Hardwood Flooring (Refinishing)
- > Sound proofing/Sound deadening rooms
- > Bathroom and Bath Tub Re glazing
- > Tile work (Walls and Floors)
- > Custom Radiator Covers

we work closely with our vendors to stay up to date with new trends and new products. It's this relationship that separates us from other contractors.

When it comes time to make a choice on a contractor that fits your needs, we trust that you will make us as your partner!



CARPENTRY & FLOORING CONTRACTING

C A R P E N T R Y

Residential Carpentry Division:

Our carpenters pay great attention to detail and precision as this is the core of outstanding carpentry work. We do the tough, big jobs such as building Carpentry works ,Housing Society Carpentry Works and additions but also possess the workmanship to install / make Wooden Doors .cabinets, blinds, crown molding and other filigree and complicated projects that often complete the look of a home, while adding valuable details. Our carpenters always strive for the best customer service and workmanship to make our customers experience the best one.

We are a full-service residential and commercial carpentry contractor. We are your local carpentry company servicing the Pakistan areas.

Our carpentry experts offer the following carpentry services:

- > Kitchen installation and remodelling
- > Bathroom installation and remodelling
- > Basement refinishing
- > Building decks
- > Window installation and replacement
- > Garages
- > Sheds
- > Doors
- > LCD Cabinets / Cadenza
- > Wardrobes
- > Decorative wooden wall
- > Ceiling etc.



Commercial / Corporate / Industrial Carpentry Division:

Our carpentry professionals know that commercial settings have strict regulations. We take every necessary step to comply with these regulations and provide the documentation required (proof of insurance, liability and workers compensation, etc.) prior to starting any project.

We meet deadlines for work! Also, we make sure that we communicate with the client during all phases of the project and after completion. Customer satisfaction is our highest priority.

Our carpenters are experienced in

- > Tenant up-fits
- > Wooden wall installation and repair
- > Kitchen remodelling
- > Wooden Flooring Deck
- > Wooden Doors / Windows
- > Office space build-outs
- > Office / Retail renovations / wooden works
- > Restaurant Wooden Works
and more



F L O O R I N G

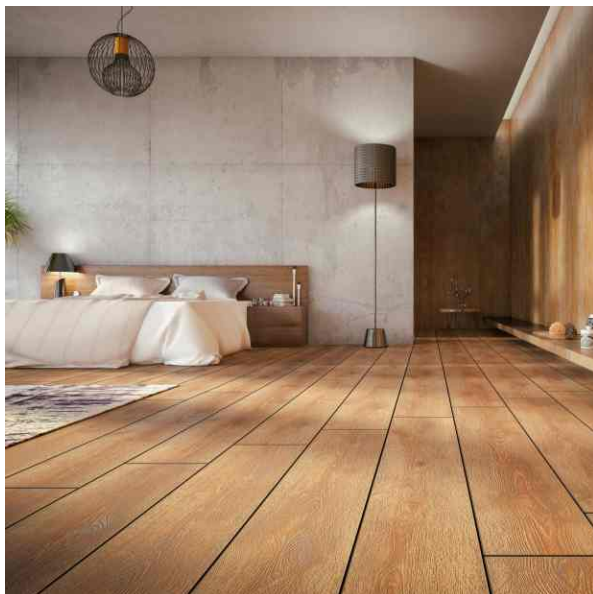
Residential Flooring

Floor installation starts with picking the floor material that best suits your lifestyle, design and decoration needs. Our flooring experts work with you to select the best flooring materials and finish. One crucial factor to take into consideration is the amount of traffic the floor will receive.

Our flooring experts then install the floor of your choice, whether it is:

- > Hardwood
- > Wood
- > Tile
- > Concrete
- > Vinyl
- > HDF / MDF Flooring
- > Indoor / Outdoor Flooring

Flooring experts of our company also refinish, re-ground, stain and paint existing hardwood, tile or concrete floors. As we are a full-service, licensed and fully insured flooring contractor, we guarantee you quality artistry and customer service from start to finish. Our flooring professionals make sure that everything in your home is protected from dust before we start and clean up thoroughly after the job is done. Demolishing and removing old floor is also done by our flooring professionals. We demo, remove and dispose of existing hard wood floors, tile & carpeting, supply waste containers and transport debris to waste management.



Commercial Flooring

Our flooring experts know that commercial settings have strict regulations. We take every necessary step to comply with these regulations and provide the documentation required (proof of insurance, liability and workers compensation, etc.) before starting any project.

We meet deadlines for work! In addition, we make sure that we communicate with the client during all phases of the project and after completion. Customer satisfaction is our highest priority.

Our commercial flooring services include:

- > Floor installation for hardwood floors, tile and cement floors
- > Re-grounding of tile & hardwood floors
- > Refinishing floors
- > Floor maintenance for hardwood floors, tile and cement floors



PARTITIONS & FALSE CEILING CONTRACTING

We are interior partition, dry lining and suspended ceiling installation contractors and operate within Pakistan.

Specializing in all aspects of interior fit-outs from acoustic office refurbishments to commercial security partitions to fire-rated industrial enclosures to hygienic ceilings in hospitals, we offer an affordable solution to meet your suspended ceiling and partition installation requirements.

We supply and install suspended ceilings and interior partitions from all the leading manufacturers.

Suspended Ceilings:-

We supply and install the full range of suspended ceilings available in today's market and offer expert advice on whichever suspended ceilings best meet your requirements. Aside from good aesthetics, suspended ceilings also provide practical elements such as improved acoustic, thermal and hygienic anti-bacterial properties. Not to mention fire rated ceilings, moisture-resistant ceilings and a solution for concealing services such as cables, pipe-work and ducting. Suspended ceilings also offer other benefits such as improved light reflectance and impact resistance. All interiors can be improved with the installation of a new suspended ceiling. Suspended ceilings are manufactured in a variety of materials from mineral fibre, glass fibre, rock fibre, plasterboard and metal, so



there is always a solution regardless of whatever your ceiling requirements may be.

Partition Systems:-

We supply and install all the different types of interior partitioning from aluminium framed partitions and metal stud partitions to frame less glazed partitions. Regardless of your requirements, we offer an interior partition system or drywall system that will be suitable. This includes fire-rated partitions, acoustic partitioning, office partitions, security walls, dry lining, doors, demountable partitions, glazed partitions with manifestations or just simply for privacy.



ELECTRICAL FITTINGS & FIXTURES SERVICES



We understand that as a business, you have regulations that need to be met, and we can help with advice and comprehensive solutions.

We offer Electrical Fitting and Fixtures Services, providing you with the complete package from installation to maintenance and repairs. Our services are carried out by qualified electricians, ensuring that your company meets all electrical health and safety regulations.

Our qualified electricians can also help with all electrical needs from additional power and Lighting points to full rewires and new installations throughout your Home, Residential, Commercial Building, Industrial and Corporate Building in Pakistan. We are friendly and reliable and ensure a high quality finish.

- > Electrical work
- > Cabling management,



- > Arrangement of the cable under of all workstation
- > All electrical faults maintenance,
- > Repairing and new wiring installations
- > Ceiling fan repairing
- > Tube light fixing ceiling
- > New sockets installing
- > Switches & sockets changing
- > New electric wiring
- > Db installation and fixing
- > LCD fixing or LCD hanging on a wall
- > Lights fixing or installing
- > Globes fixing or installing
- > Any electrical troubleshooting or short circuit
- > Generator installation and repair services
- > Motor installation and repairing
- > Electrical fittings & fixtures services
- > Home appliance repair
- > Audio-video system
- > Home appliances



Emergency Repairs:

We offer an emergency electrician service that allows our customers to have peace of mind, as we can get to you within one hour.

Emergency Services:

We offer an emergency call-out service for all our commercial clients. Our timely response will ensure that your business remains up and running.

CLADDING WORKS

(which shall include carrying on
of all activities as are related or
ancillary thereto.)

WE ARE HERE

- > To meet or exceed our customer's expectations.
- > To maintain high standards of honesty, integrity and ethics.
- > To emphasize long term customer relationships, never short term goals.
- > To make our workplace, products and processes as environmentally safe as possible.
- > To improve our processes through study and teamwork, and constantly improve our quality and craftsmanship.
- > To earn your trust and respect through complete and reliable service.
- > To take pride in our workmanship and product quality.

WE ARE YOUR CHOICE

To these qualities, we hold true, and it is these same principles that continue to set us apart. We are trustworthy, reliable, dynamic, creative and perceptive, and 100% behind its customers.

WHAT WE MAKE

We constantly strive to meet market and clients requirements; if you need it, we probably make it. Our products cover a wide range of construction requirements and we're always expanding. We strive to provide high quality, high performance, efficient and durable and warranted products; here are some of them.



- > Aluminum Windows and Doors
- > Frameless Glass Facades
- > Skylights

QUALITY IN EVERYTHING WE MAKE

Our focused management constantly works to instill our quality policies in every one of our employees; it is included in new employee training and training on the QMS, and is posted throughout the facility. The management continuously reviews quality policies, always gearing them towards stability and suitability for our organization and clients. Here are some of our policies.





TEAMWORK

To allow continuous improvement in quality and delivery, we believe in teamwork among our employees, customers and vendors to improve overall satisfaction and involvement of all CPN personnel through training and communication.

Customer Satisfaction, through timely delivery of quality products. Early detection and prevention of non-conformity during the sales and purchasing processes and warehouse operations, and the application of root cause and corrective action to prevent reoccurrence.

HOW WE DO IT

It all starts with the sample submissions; that's where we take over, and that's where our execution process begins. To familiarize you with our systems, here's an overview of that process.

Preparing and submitting comprehensive sets of shop drawings of the required items for prior approval of the architects and consultants. These consist of items such as windows and doors and will be provided in schedules showing the elevations, dimensions, quantities details and section numbers.

Section drawings are created, showing the aluminium profiles, glass, gasket and accessories, each with their specifications, resources and thickness. These also show the method of frame installation with concrete, stone, block, wood and more, down to the location of screws, sealant, water drainage holes and wood backing. These section drawings are then subjected to modifications ordered by the architects and consultants and are resubmitted after adjustment. And after final approval of all shop drawings, designs, aluminium profiles, glass, accessories and colours, material orders are prepared for the relevant importing companies.

The size and design data are then turned into digital data, for entry into specialized computer-aided design software. The fabrication and cutting sizes are calculated and printed, then supplied to the factory for cutting and assembly (a tolerance of 6-7mm is maintained between each frame and the structural opening). The software also calculates the number of gasket and accessories required for each window and door. It's worth mentioning that when this software provides a cutting list for the aluminium profiles, it orders cuts in a streamlined, systematic method from each bar to ensure minimal waste.

Assembly of frames and vents using modern crimping machine to ensure hairline-mitered joints, and prevent torsion from opening the corners when fitted in the structural opening. As a result, all corners and junctions will be airtight and sealed with a suitable sealant.

Fitting accessories, ironmongery and hardware onto windows and doors; these include heavy duty hinges, locks, latches, pull handles, flush bolts, water drainage covers and more. These are precisely fitted in their previously punched uniform gaps. Other items such as gaskets and mohair brushes are fitted into their rails, found on the frames and vents. Some cases require additional hardware, such as floor springs and overhead door closers; such items are installed in the site.

After fitting all the accessories, ironmongery and hardware, the glazing beds are fitted for each window or door. All Products are now complete and are cleaned of dust, oil and any chemical residue. Finally, all products are wrapped and protected with tape to ensure that when they are delivered and stored in the site, these windows or doors will remain free of deformities, corrosion, scratches and any damage.

And while the products are carefully handled and delivered by trucks, a clean, suitable storage area is prepared onsite; these items will be stored off-ground. Here's where the fun begins and the installation. Here's how it goes. Machine-cutting the Aluminum frames, window or door vents and glazing beds via sharp blade saws to ensure uniform, fine mitered edges.

Preparing the order of glazing sizes to be sent to glass factories for cutting and double-glazing. Punching frames and vents for handles, hinges, locks, flash-bolts and water drainage holes using specialized punching machines with sharp edges to ensure clean uniform openings.

INSTALLATION OF WINDOWS AND DOORS:-

Before installing specific items, their structural openings are cleaned from sand, dust and bulky materials that might prevent good sealant to plaster adhesion. Anchorage plastic plugs are inserted drilled into place and surface-leveled, before the drill dust is cleaned. (No anchorage will be used at sills).

Wood wedge backings are placed around the perimeter of the frame. Stainless steel screws are fastened into their plugs while adjusting the position of the frame to the vertical, and aligned and with uniform tolerance around its perimeter. Again, the surrounding plaster is thoroughly cleaned with a damp sponge, the sealant is injected into the external and internal perimeters of the frame, and a 24 hour period is allotted for the sealant to dry and stiffen. (At this stage, it is advisable to apply the final coat of paint to the plaster). After drying the sealant, hinged vents are installed on their pins, and the necessary adjustments of hinges, handles and locks are executed to ensure perfect closure between the frame and vent, making the window or door airtight and weatherproof.

INSTALLATION OF CURTAIN WALLS

The site supervisor checks the existing cradles. These should enable the technicians and supervisors to reach all required areas of the unit and should be safe and well installed. We mark the bracket positions on the concrete slabs or steel structures and install the brackets of the vertical mullions. And all brackets, anchors and expansion joints are checked by the site engineer to emphasize the appropriate selection of the item.

The vertical mullions are installed sequentially, according to the positions and installation instructions. Now the site project supervisor checks the vertical and horizontal alignment and inclinations of the mullions, using appropriate measuring tools and equipment. Then the transom bars are installed, in position. All the gasket membranes are then installed over the mullions and transoms.



Here again, all the unit alignments and brackets, anchors and fasteners fixing are checked. Depending on the system used, whether it is a conventional or structurally glazed curtain wall, the glass is installed according to the engineer's instructions. In conventional curtain wall systems the pressure plates and cover plates are installed over the main body of the unit. After installing the glass at certain panels, the bolts and fasteners of that unit are tied up to secure this panel. In structural glazing curtain wall systems, each panel is installed with the internal brackets at the transoms and mullions, then the gasket membranes are installed and the structural silicon applied where necessary.

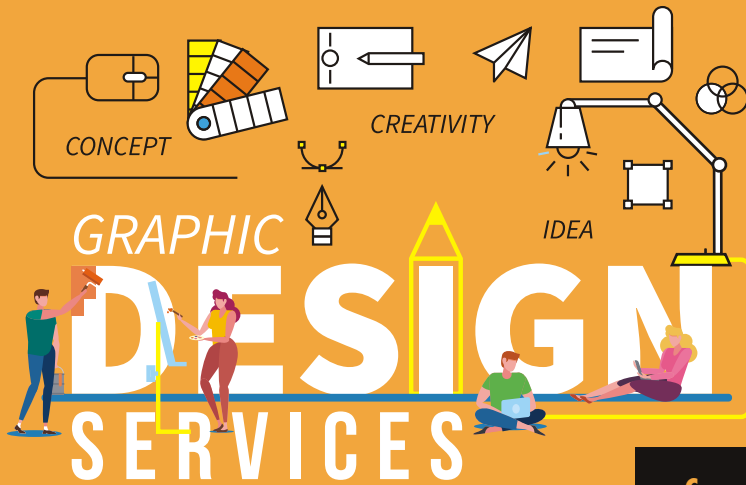
Then the unit is ready for a complete inspection.

WHO WE WORK WITH:-

We constantly strive to meet market and clients requirements; we have created a large number of successful partnerships over the years. We are proud to work with the industry's key people, and through them provide you with the best possible products, here are some of the products.

- > Aluminum Systems
- > Hardware and Accessories
- > Glass and Glazing





WE DO WORK HARD
ENJOY OURSELVES
EXCEED EXPECTATIONS
LOVE DESIGN

WE DON'T LOSE SIGHT OF THE GOAL
WASTE OUR CLIENTS MONEY
CUT CORNERS

An introduction to a creative graphic design agency that is based on integrity, a love of design and a commitment to quality. Attractive and Unique Designs are the roots of our company. We adds new ideas to your Company and show best effects never seen before. We are Expressing words of graphics in every design.

Corporate Identity

- Logo Design
- Branding
- Company Profiles
- Stationery

Strategy

- Advertising
- Consultancy
- E-marketing
- Promotions
- Printed material
- Exhibitions

WHAT WE DO

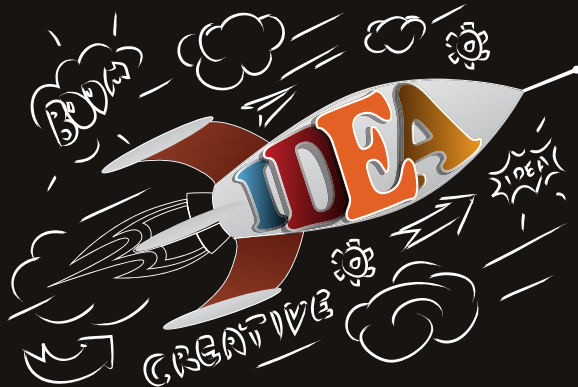
Marketing

- Website Design
- E-commerce
- Brochures
- Catalogues
- Presentations
- Carton & Label Design
- Multimedia
- Banners & Hoardings

Other

- Book Cover Design
- Publication Design
- Printing

WINDS INTERNATIONAL



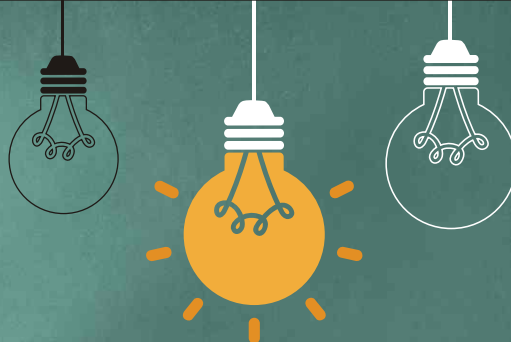
We create the unfair ideas that give our clients an unfair advantages. Sometimes they're great big ideas that transform entire organizations. Sometimes they're nimble little ideas that hijack a conversation. Unfair ideas let us do more with less. They're contagious. They're talked about. One day, ideas like these may be commonplace, but today, in our clients' ceaselessly competitive marketing environments, they're uniquely, utterly and wonderfully unfair.

Let's
Re create
your



Either way - your brand words will help influence your decisions. You want to be sure that you keep things consistent, so that your readers & clients are constantly getting the same message from you every time they interact with your brand. Choosing brand words is an important step when creating a brand strategy. We usually pick three, but it's really about what speaks to you. You might choose to only pick one brand word and spend all of your focus integrating that ONE word into your brand.

The **Single Source** for all
your **Business Needs**



CORPORATE
GROUP **PROFILE**

Solutions

PRODUCTS ▶



Security Integrated Solutions

- ▶ Access Control Solutions | 55
- ▶ CCTV Solutions | 55
- ▶ Digital, Video Recorders, Mass Storage Recorders & Accessories | 56
- ▶ Remote CCTV Systems | 57
- ▶ Time & Attendance Systems | 57
- ▶ Key Management System | 58
- ▶ Gate Barrier and Car Park Management System | 58
- ▶ ID Card Production System | 59
- ▶ Turnstiles | 60
- ▶ Checkpoint Solutions | 60
- ▶ Under Vehicle Inspection | 61
- ▶ Blast Proof Doors and Windows | 62
- ▶ Intercom Solutions | 62
- ▶ Audio Visual Systems | 62

IT Division

- ▶ The Workflow | 40
- ▶ Solutions & Services | 42
- ▶ Active Infrastructure | 43
- ▶ Hardware & Software Solutions | 45
- ▶ Office Communication Systems | 47
- ▶ Audio Video Equipment | 48
- ▶ Photocopiers & Interactive | 50
- ▶ Pana Boards
- ▶ Building Management | 51
- ▶ System

General Order Services 52-53

- ▶ Our Competitive Edge
- ▶ Quality ▶ Infrastructure
- ▶ Import & Export
- ▶ Range of General Order Supplies

The Single Source for all
your Business Needs



CORPORATE
GROUP PROFILE

winds

INFORMATION ►
TECHNOLOGY
DIVISION

A TOTAL
IT RESOURCE
COMPANY

WINDS INT'L TRADING CO.



IMAGINE A *World*

where your
technology
investment
functions
seamlessly
on a single
network

where all your
communication
needs are
met by one
system, run
by one
company

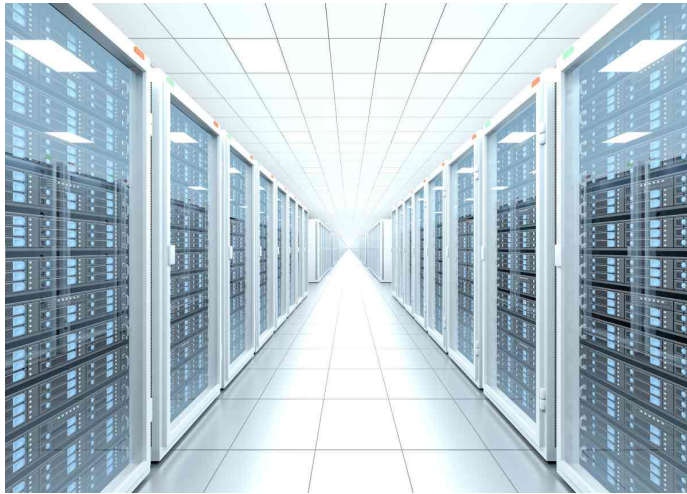
where your
customers
are billed
for all your
services in
one simple
process

of total
security with
guaranteed
availability
of all your
mission
critical data

of integrated
systems
designed,
built and
run by
WI Information
Technology



WIIT AND THE ART OF **SYSTEMS INTEGRATION**



Systems integration can be broadly defined as the bringing together of disparate subsystems and enabling them to function as a single, seamless entity.

As the world grows ever more reliant on diverse technology to deliver services and as customers' expectations increase accordingly, systems integration ceases to be a luxury and becomes a necessity. Welcome to a company that can meet your integration challenges with an unflinching resolve and unparalleled

At **WIIT**

- ▶ Your timetable is our timetable.
- ▶ Your priorities are our priorities.
- ▶ Your opportunities are our opportunities.

Imagine the
world of **WIIT**



The successful delivery of integrated
IT resources

THE WORKFLOW



CONSULTATION

From the outset, WIIT's consultation team will work closely with the client to define needs and challenges and to scope solutions. We look beyond the conventional to seek the remarkable.

If there is a gap between the capabilities of existing technology and our clients' needs we will deploy our considerable resources and expertise to bridge it. We firmly believe the only limit on what we can achieve is the extent of our imagination.

DESIGN

A large, skilled and dedicated workforce will work ceaselessly to turn our jointly conceived vision into a technical reality.

Our engineering and design section will work closely with the key players in the project to make the practical installation of the network and its components a smooth, fluid process. Where the limits of conventional practice are reached, our motivated research and development section are ready and waiting to push the envelope further and come up with innovative and novel solutions to emerging challenges.

**Our success in
delivering the
highest quality
work on time,
every time.**

Our software solutions division has an enviable track record of integrating third party applications into custom systems and developing bespoke programs as required. It all combines to make the design of every project a comprehensive process where nothing is left to chance and without reliance on third party contractors.

WI Information Technology provides turnkey system integration services that help organization gain a single view of their multiple separate systems. From WI Information Technology's prospective, a system within an organization, whether it is a legacy system, an Enterprise Resource Planning (ERP) Suite.

PRE-STAGING

Our pre-staging facilities are in many ways the key to our success in delivering the highest quality product on time, every time. In contrast to conventional integration practice when products are provided and tested on site, all WIIT suggested and built systems are first put through a rigorous real time evaluation process at our sophisticated pre-staging facilities.

This process means that the product will have been fully tested and modified as necessary before it ever gets to the project location, leading to huge savings in time and cost. Once the product has passed the pre-staging phase, it is ready for installation on site.

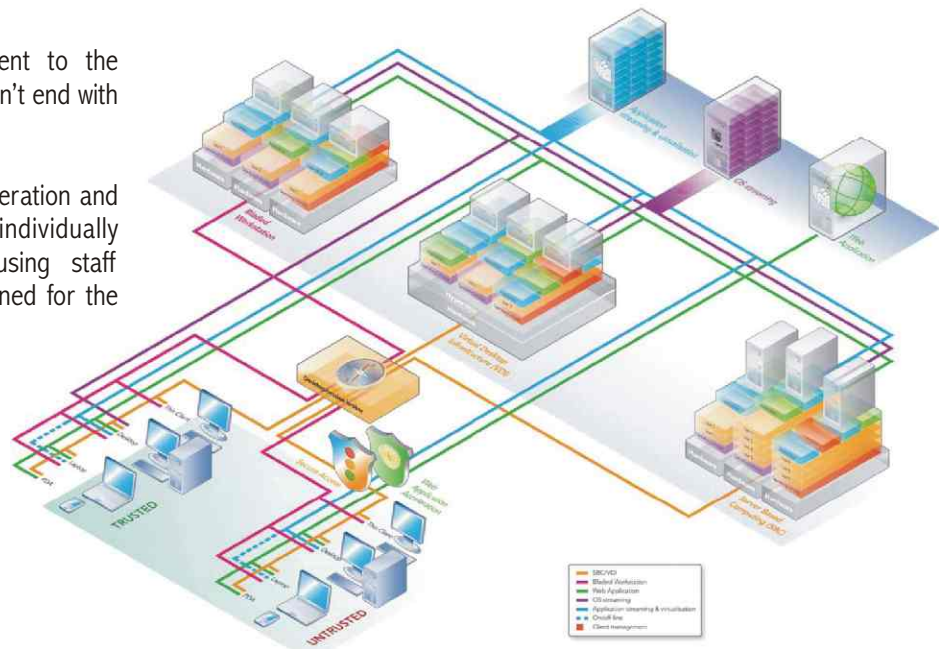
Our dedicated team of professionals will be fully prepared and ready to go into action according to an agreed schedule that fits with the client's requirements. And, because all the components of the product / requirement and the system have already been tested in real world conditions, there are no nasty surprises or time-wasting modifications to be done. We simply install, power up and wait to go live.

OPERATION AND MAINTENANCE

Of course, WIIT's commitment to the perfect client experience doesn't end with installation.

We offer a comprehensive operation and maintenance programme individually tailored to each project using staff specifically recruited and trained for the purpose.

After all, who is better equipped to protect your investment than the people who conceived and built it?



「
?
who

is better equipped to
protect your investment
than the people who
conceived and built it」

SOLUTIONS & SERVICES

ENGINEERING AND DESIGN

From the first contacts with a client, the company will begin to scope and conceptualise an integration project based on the client's minimum technical requirement.

Our design and engineering team will produce detailed single line drawings at an early stage outlining precisely how the network will be installed and also look for ways to improve and expand upon the minimum technical requirement if possible.

Working closely with architects, designers and contractors, the installation of the structured cabling is precisely configured to ensure maximum efficiency and compatibility with other systems such as electro-mechanical and HVAC installations.

As our clients' requirements evolve and develop, we adapt our drawings and plans accordingly. Again, WIIT's defining



qualities of flexibility and a willingness to meet emerging challenges head-on are present throughout the design and engineering process.

Any discrepancies between our ready for construction drawings and the situation encountered by our engineers on-site are recorded as part of the redlining process and then incorporated into our final, as-built plans presented

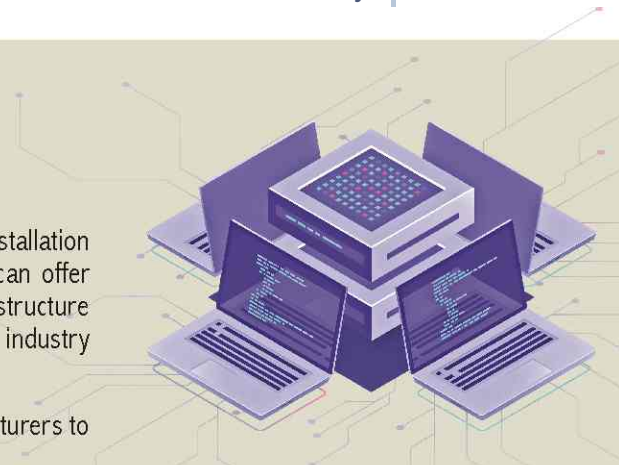
WIIT have the largest fully-trained structured cabling design and installation team in the entire Country.

PASSIVE INFRASTRUCTURE

WIIT have the largest fully-trained structured cabling design and installation team in the entire country. This impressive resource means we can offer unparalleled expertise in all aspects of passive network infrastructure installation, deploying the latest techniques and materials to industry standards.

We test and evaluate every component, liaising directly with manufacturers to ensure maximum performance with optimum value for money.

Our cabling design methodology follows international industry standards with consistency of planning and implementation across sub-systems and projects making for a predictable and efficient workflow. Across our projects, Copper Cabling i.e. CAT 5e, CAT 6 & CAT 7 augmented or fibre optic cabling is used according to data transmission requirements and attention to cost/benefit analysis.



ACTIVE INFRASTRUCTURE

When conceiving the active infrastructure of any system, required performance dictates design.

With this in mind, WIIT will select the best components to meet the specific demands of each particular project.

We are not tied to specific third party vendors, developers or manufacturers, we can evaluate and identify the best possible products to meet our clients' need.

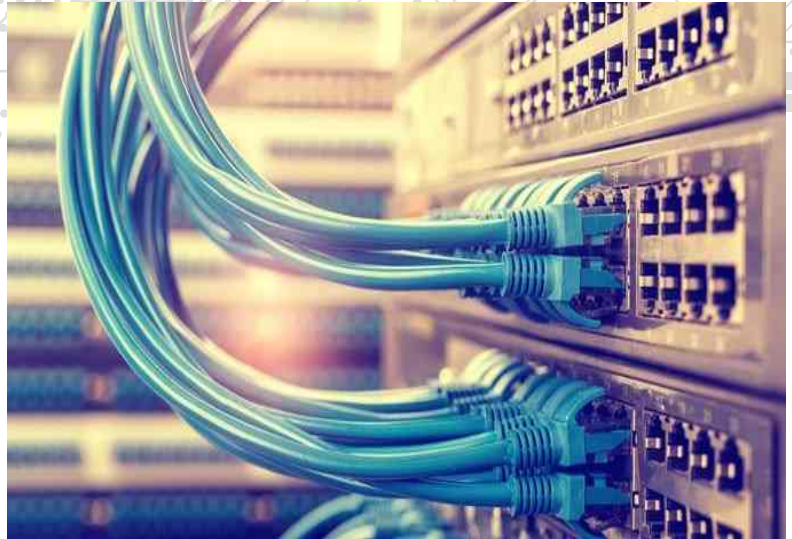
We also pay the utmost attention to all aspects of intrusion detection and prevention, understandably a major concern for our clients.

As we are building mega networks, often open to the public, it is vital that we put in place adequate security measures to protect against unintentional or malicious intrusion and damage. Integration brings huge benefits but requires exceptional security skills to ensure all the services running on it are properly protected.

At WIIT we are constantly updating our knowledge and skills in the field of threat management.

All access privileges are strictly controlled and every intervention immediately logged – a powerful disincentive for malicious activity.

Our data centres are constructed and operated to the highest international standards with maximum levels of availability incorporated to protect mission critical operations.



In addition to deploying the best in security techniques and procedures, our network management protocols deliver unparalleled levels of reliability.

Unintentional damage is identified at an early stage by the network management system (NMS), whose topology is defined according to the core functionality of the system.

For example, we set the threshold for bandwidth limits and the NMS is alerted if there is a danger of it being exceeded and the network compromised.

The NMS allows the network operator to constantly monitor pre-emptively and to take prompt remedial action where necessary, often before network users notice any problems.

WIIT is not tied to a single
BRAND OR PARTNER

DATA CENTRES



WIIT has extensive experience in the design, build and running of data centres.

As an essential and potentially vulnerable part of any integrated system, the data centre needs to meet stringent requirements to ensure high levels of redundancy and availability.

In discussion with our clients, we will recommend the optimum design for each data centre after careful assessment of mission critical needs.

At WIIT we build data centres taking into account the following considerations:

- **Site space and layout**
- **Cabling infrastructure**
- **Tiered reliability**
- **Environmental considerations**

From the basic Tier One to the most secured and highly redundant Tier Four data centres, WIIT can provide all these levels of data centre and we will recommend which is the most appropriate according to our clients' requirements and the level of potential threat to their operations



HARDWARE & SOFTWARE SOLUTIONS

WE NETWORK | WE DELIVER | WE ARE CUSTOMER FOCUSED

WIIT Business Unit includes the all essential Information Technology equipment (Hardware and Operating Software, Middleware, Consumables, Parts) and networks which are essential grounds for the operation of any Enterprise, Organization or Office.

WIIT undertakes the planning, study, proposal and the development of simple and in-depth projects, the necessary equipment and infrastructures, and the necessary short and long term technical support. WIIT Service Level Agreements (SLA's) that supply additional services executed by sales and technical professionals that are certified in their respective fields.

WIIT offered Hardware equipment, from Major leading brands such as IBM, Hewlett-Packard, Lenovo, Fujitsu-Siemens, Dell, Acer, Cisco, Intel, Microsoft, and Symantec guarantee the uninterrupted operation and output in a completed environment - end to end integration.

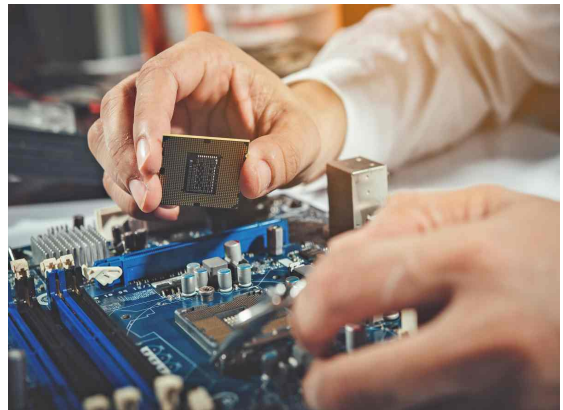
WIIT HARDWARE / SOFTWARE CATEGORIES

IT Hardware

- Servers, Data Centers
- Storage, High Availability Systems
- Networking and Data Communication Devices, Security, Wireless, Routing & Switching
- Desktop / Racked Mounted Pc's
- Notebooks, PDA's Handhelds
- Printers (all categories)
- All-in-One Multifunction Devices (Multifunction Printers-MFP's)
- Scanners, Scanning Devices - all sizes
- Plotters - Design Devices - all sizes
- Monitors / LCD's
- IT Peripherals
- Spare Parts / Accessories
- IT Consumable

Software System / Utilities / Internet / Mobile Services / Middleware

- Licenses
- Add-On's
- Upgrades
- Contracts - Enterprises Agreements (EA)
- Internet Licenses and Connections
- Internet Applications and Services
- Mobile / Telecom Licenses and Services



OPERATION AND MAINTENANCE

Operation and maintenance of a WIIT designed and built integrated system is an essential investment of the same magnitude of importance as the original commission.

It is essential to have a properly-run operation and maintenance service.

We offer a comprehensive O&M package which guarantees a combination of seamless operation, maximum availability and optimum system longevity.

Once completed and fully commissioned, the system will be taken over by our highly skilled on-site personnel, specifically recruited and trained for the particular demands of each project.

This team will be employed on the basis of their technical abilities, experience and qualifications and undergo both classroom-based and practical training on the hardware and software involved before being deployed on site.

We are careful to provide them with the latest equipment and knowledge to cope with all the demands placed upon them.

Because WIIT has designed and installed the system, we are in the ideal position to understand its specific operational requirements and to design a comprehensive maintenance schedule.

Using the latest computerised maintenance management applications, we can accurately predict component life and plan replacement strategies and calculate the cost of maintaining assets in both manpower and material terms.

We keep a complete equipment history for every single asset which allows us to make key decisions on replacement or repair according to a rigorous cost/benefit analysis.

We can also identify instances where emerging technology is able to improve functionality and modify as appropriate and according to price performance criteria.

We aim to provide the maximum life for each project, giving our customers the best possible return on their investments.

A small warehouse facility is maintained onsite to store duplicate and replacement components so no delay is incurred in obtaining them.

We operate a full duplication policy where all equipment can be replaced immediately in the event of failure or removal for maintenance.

Working closely with manufacturers through our subsidiary procurement arm, our supply chains are solid and reliable, ensuring the timely supply of all components required to meet the demands of our O&M strategy.

For every project we develop a yearly maintenance plan from which flow monthly, weekly and daily schedules of preventive and predictive tasks.

In addition, our onsite team will be fully prepared to deal with any emerging issues and will act swiftly to maintain the system's operational integrity.

They have direct access to WIIT's highly qualified technical support team at company HQ who will be intimately familiar with the project if they need to refer any issues not immediately resolvable on a local level.

This team will also be involved in the modification and upgrading of components where appropriate.

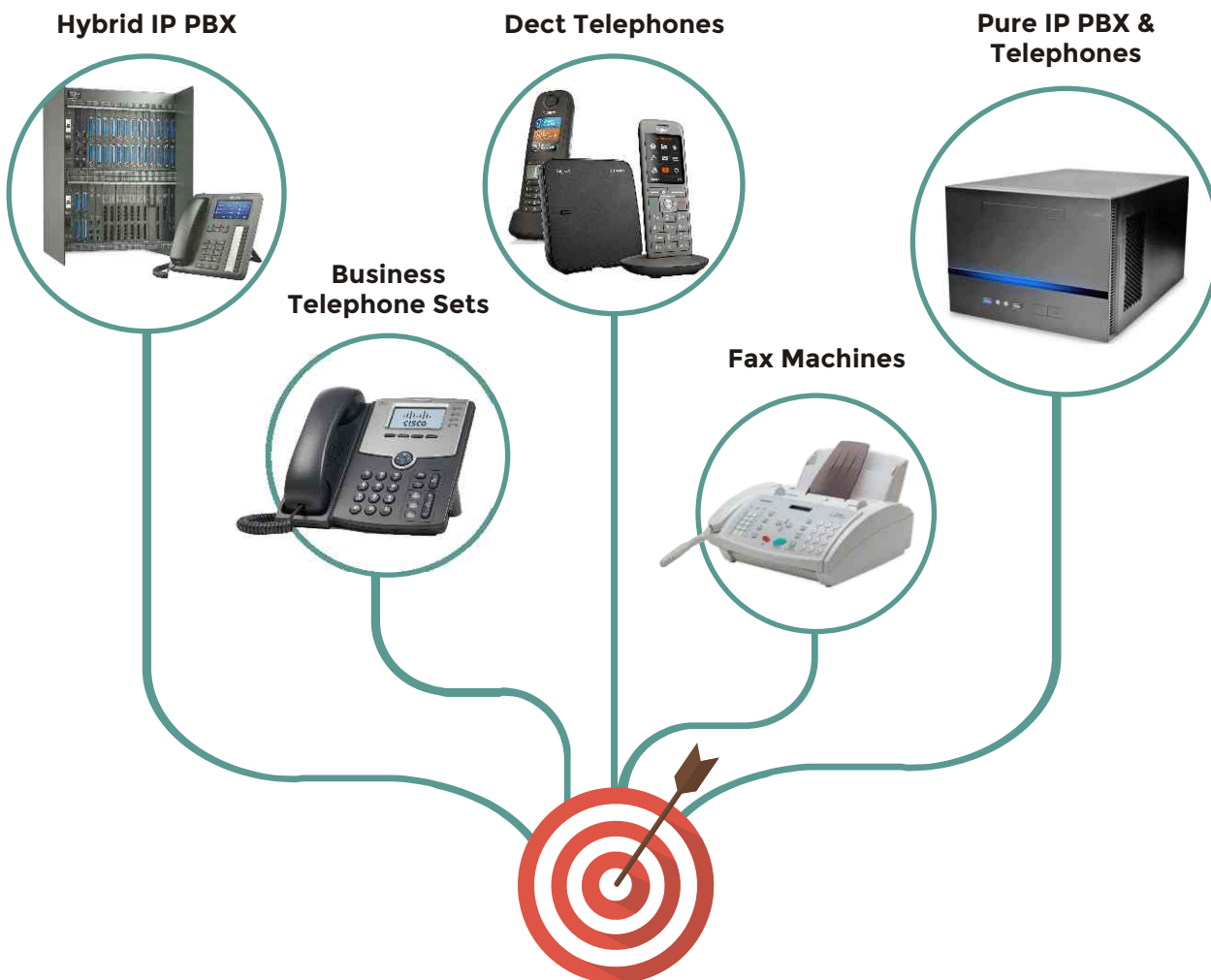
And, because, WIIT is not a centralised organization, decisions come fast rather than being mired in bureaucracy.

In short, as with all aspects of the company's operations, WIIT's operation and maintenance programme always exceeds customer expectations.

OFFICE COMMUNICATION **SYSTEMS**

From small single user systems to elaborate voice over IP systems with continuous recording backup, a WINDS INTERNATIONAL telephone system network representative will be happy to visit your place of business and review all the new technology available to prospective clients in this ever expanding field.

THE MOST ACCEPTED COMMUNICATION SYSTEMS IN THE WORLD



AUDIO VIDEO EQUIPMENT

We understand that every organization has different communication requirements from simple projector or flat panel installation to complex integrated multi-media solutions. From business to education to government, we have the products and expertise to manage your specific audio/visual system needs from concept to completion.

DESIGN

At Audio Visual Aids, we design fully integrated custom solutions for you're a/v needs. Dependent on your project, our control systems can incorporate sound, video, lighting and data through a single touch panel. The design process begins with consulting to determine your project goals, requirements and budgets. We then survey your site to provide product recommendations specific to the size and placement considerations of your site.



INSTALLATION

We offer turnkey installation services for pre-construction and existing sites in Pakistan. Our in-house installation crews have all undergone extensive background checks and have experience with various installation projects.

PRE-CONSTRUCTION

When designing an audio/visual system prior to site construction, we are able to consult with your architects and builders to provide recommendations on the best layout, wiring and mounting solutions for your audio/visual needs.

EXISTING SITES

If you already have an established location, we evaluate the site to determine the optimum installation solution for integrating the audio/visual system into your current site.

VIDEO & AUDIO CONFERENCING SOLUTIONS



Anytime, from anywhere
Experience the Possibilities >>

BUSINESS

From presentation systems to videoconferencing to sound and video recording to network integration, our audio/visual systems can help your business communicate with customers, vendors and employees. We consult with you to determine the optimal system for your site and audio/visual needs, and we can even work with your architect or IT director to facilitate the installation of the project. We are always considerate of your business schedule and budget.



CORPORATE

Provide continuity and consistency across your corporate campus with integrated audio/visual systems. We design and install state-of-the-art systems for training facilities, corporate boardrooms and secure monitoring rooms.



SMALL BUSINESS

With diverse needs and limited budgets, small business benefit from our custom design of multi-use audio/visual systems. Through consulting we determine your specific communication needs. We are able to work within your budget by passing on the extremely competitive product prices we gain due to our large purchasing volume.

HOSPITALITY

Whether you need digital signage and projection capabilities for your site or you plan to offer conference rooms equipped with audio/visual systems, we interview you to determine the best products and systems for your end-user. Our system designs incorporate the latest technology and are user-friendly.



INFORMATION TECHNOLOGY

Reduce costs and minimize downtime through system integration and asset management of all your AV systems. We provide networkable solutions for communication that allow you to monitor all your AV equipment from a central location.

COMMERCIAL INTERIOR DESIGNERS & ARCHITECTS

Our early involvement in the design and development of a facility allows us to specify the design of audio/visual systems that are completely integrated into your site. Extensive consulting determines the best functioning system for a specific facility by considering appropriate screen proportions, equipment layout, mounting placements and wiring and cable options.

PHOTOCOPIER & INTERACTIVE PANA BOARDS

When a project includes a new utility area or utility room. Winds International have internationally known brands of copiers, fax machines and other automation equipment.

PHOTOCOPIERS

All machines are network ready for printing, scanning with Built-in A3 Size Printing



PANA BOARDS

STANDARD PANABOARD What's a Standard Panaboard?

It's a whiteboard that lets you scan information written on the board in black and white, and immediately print it out. The scanned data can be transferred to a PC by

connecting the PC to Panaboard with a USB cable. The Panaboard lineup includes various models for different applications, ranging from the basic type to high-end models for use in hotel conference rooms and boardrooms.

INTERACTIVE WHITEBOARD What's an Interactive Whiteboard?

It's a whiteboard that lets you project PC screen images onto it, and lets you operate the PC right from the board surface. This contributes to smooth, easy-to-understand presentations and is ideal for meetings in which Websites are displayed, motion images are shown, and additional information is written while meeting.



PROJECTORS



SCANNERS



TOUGH BOOK



BUILDING MANAGEMENT SYSTEM

WHAT IS AN INTEGRATED BUILDING MANAGEMENT SYSTEM?

An Integrated Building Management System is a single, cohesive building management system controlling lighting, HVAC, fire, security, surveillance, access control and other facilities. Integrated Building Management Systems bring many benefits when trying to squeeze the best performance from your building.

BETTER MANAGEMENT

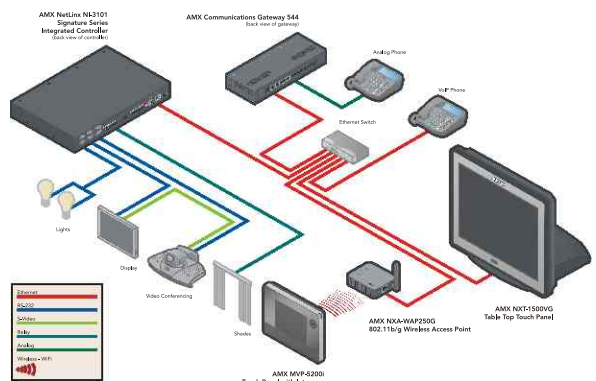
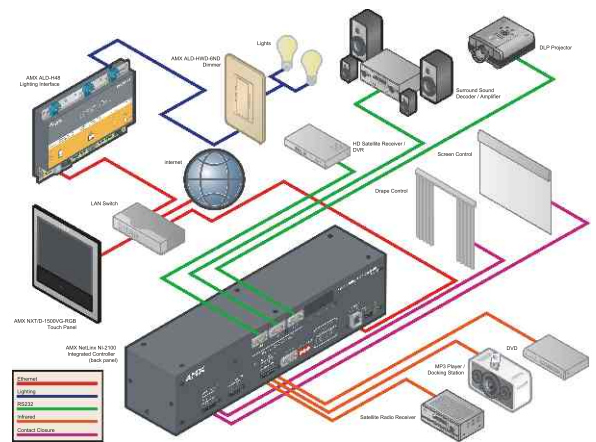
Within smaller buildings, the ability to monitor and instruct the system from a single workstation, with a single display, means the System Manager's task is more efficient. They spend less time moving between systems with different GUIs and more time improving the building operation. Imagine checking the temperature, lighting levels and fire-detector status of a building, and comparing total energy usage with occupancy - all from a single screen.

When several engineers are managing larger sites, displays can be optimized for management function (energy saving, maintenance, help-desk) rather than for system function (lighting, HVAC, etc). Maintenance staff can check plant operation across all control fields, management can check energy usage, security staff can deal with access control, CCTV, and intruder alerts.

BETTER CONTROL

Integrated Building Management System allows a level of control optimization to take place which is unavailable to standalone Building Management Systems. Security and access systems can instruct HVAC and lighting systems when the building is occupied; fire systems can control lifts; CCTV systems can be used to check fire alarms; heating systems can interact with cooling systems - the list goes on.

Occupants feel better, because the system is responding to them more. At the end of the day, the system responds by changing its operation as the staff leaves - late workers don't get colder. Real intelligent control is now possible. Better control not only brings happier occupants; energy savings increase, because energy is used only when needed. Winds International products-range can be used with existing management systems, as well as systems based on standard protocols.



WINDS INT'L TRADING CO.

CORPORATE
GROUP PROFILE

General order supplies

OUR COMPETITIVE EDGE

Our main competitive edge is the price of our products. We offer our customers world-class products at a very competitive price. We are a professionally run company, and we follow the highest quality standards in the sector.

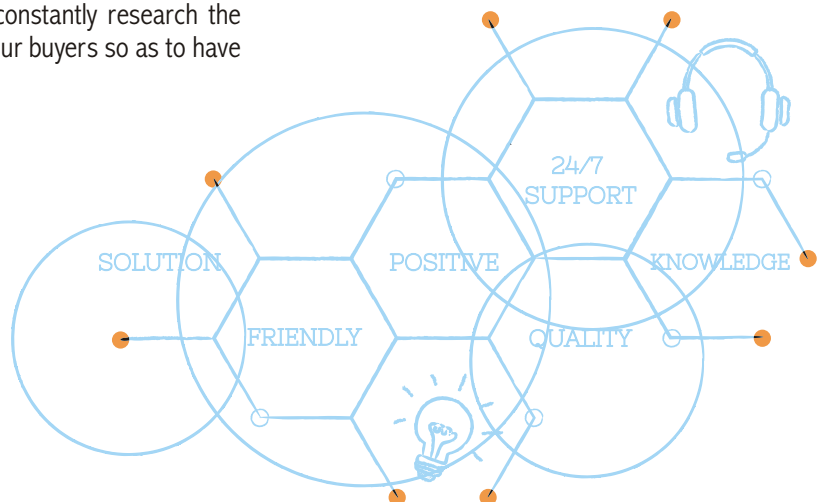
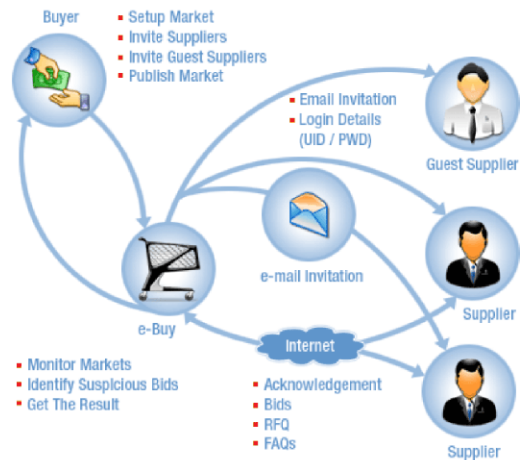
QUALITY

We have successfully achieved a high level of customer appreciation resulting in long-lasting relations by offering products that are high in quality. Our team of experts maintains a strict vigil and runs regular checks on the quality of products that are sourced before they are dispatched. The company has adopted a systematic approach to quality control and standardization, in order to achieve position for itself in the highly competitive global market.

INFRASTRUCTURE

Being exporters, we ensure that both our warehousing as well as distribution facilities are in proper condition so as to deliver products on-time to our customers. We constantly research the market and keep ourselves in touch with our buyers so as to have an accurate idea of their preferences.

These initiatives ensure that only a flawless product reaches the customer and customer's satisfaction is our first motto. We specialize in the volume production of supplies. Our comprehensive product range, which continues to grow through research and development initiatives includes.

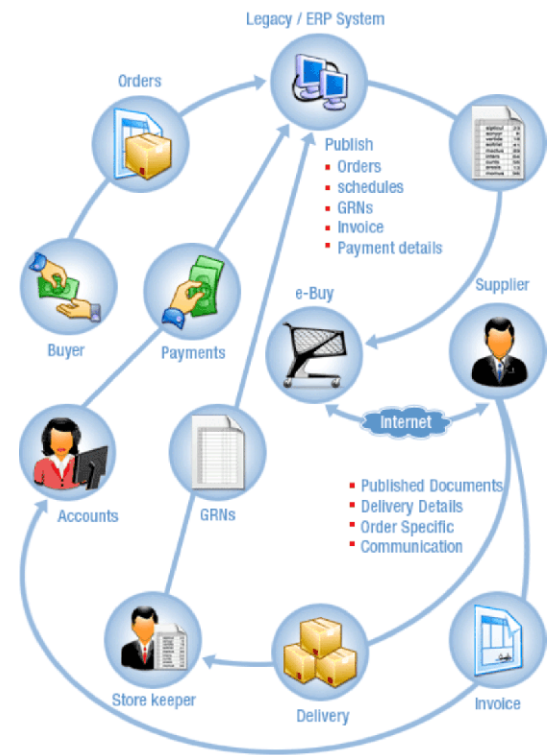


IMPORT & EXPORT

We provide a specialized gamut of service offerings relating to international business. This category includes import Products, export Products. We provide to our customers import/ export Products as per customer's requirement. We offer all types of Products, such as Supplies from port to port, door to door and port to door.

RANGE OF GENERAL ORDER SUPPLIES

- ▶▶ Computers & Printers
- ▶▶ Construction Material
- ▶▶ Construction Tools
- ▶▶ Office Equipments
- ▶▶ Electronics
- ▶▶ Appliances
- ▶▶ Fabricated Tools
- ▶▶ Residential Furniture
- ▶▶ Interior Works Material
- ▶▶ Telecommunication Equipments
- ▶▶ IT Networking Equipments (Active / Passive)
- ▶▶ Office Furniture
- ▶▶ Hardware Tools
- ▶▶ Kitchen Utensils
- ▶▶ Mosquito Nets
- ▶▶ Office Supplies
- ▶▶ Corporate Printing and Publishing
- ▶▶ Grocery Items



- ▶▶ Plastic Utensils
- ▶▶ Plumbing Tools
- ▶▶ PPRC Fitting
- ▶▶ UPVC Fittings
- ▶▶ Sanitary Fittings
- ▶▶ Tiles / Marbles
- ▶▶ Quilts
- ▶▶ Science Lab
- ▶▶ Sports Goods
- ▶▶ Safety & Security Equipments
- ▶▶ CCTV Equipments
- ▶▶ Surgical Instruments
- ▶▶ Tents
- ▶▶ Blankets
- ▶▶ Carpets
- ▶▶ Faucets etc...

The **Single Source** for all
your **Business Needs**



CORPORATE
GROUP PROFILE



winds **SECURITY** ▶ INTEGRATED *Solutions*



WINDS INT'L TRADING CO.



ACCESS CONTROL SOLUTIONS

We offer various Access Control Solutions & Security Management Systems (SMS) for your building, property or office. Be it stand-alone or a fully integrated system, we have the answer. From a single door to a large-scale complex, we can provide the most up to date and cost effective access control solutions. Advanced point & click interfacing makes controlling your system only a mouse click away. Organizations choose WISIS systems because they want -



- To have a complete, integrated security solution which utilizes an organization's existing intranet with minimal bandwidth requirement.
- A solution, which will meet the security, needs of their organization for today and tomorrow.
- To benefit from our expertise and knowledge in security business. An intelligent access control system capable of sharing information with other business applications such as building management systems.
- To be able to upgrade their security solutions progressively as new innovative systems and products are developed.
- Besides all of the above, what they really want is peace of mind.

CCTV SOLUTIONS

WISIS provide the most up-to-date & cost effective security solutions for all your CCTV needs, with a variety of cameras & accessories from leading manufacturers. Cameras come in many shapes and sizes and with varying capabilities. To make a good choice, it helps to understand broad categories of cameras first. At WISIS , we divide the cameras we offer into four general groupings:

TRADITIONAL CAMERAS ►►

These are what usually come to mind when you think of surveillance cameras. Because they're clearly recognizable, they can serve as a visual deterrent to theft or other criminal activity. Traditional cameras are generally used in high-traffic locations such as lobbies, hallways and warehouses. Traditional cameras accept a variety of lenses, making them a versatile choice for many applications.



DISCREET CAMERAS ►►

As their name implies, these fixed cameras blend into the background, either because of their small size or design. Use discreet cameras where you don't want conspicuous surveillance.

CCTV SOLUTIONS

COVERT CAMERAS ►►

These fixed cameras extend the idea behind discreet cameras. They actually look like common objects, such as exit signs, motion sensors and smoke detectors. Businesses often use covert cameras to resolve incidents of recurring theft from an unwatched area, like a break room, or to investigate the activities of a dishonest employee.



DOME CAMERAS ►►



Because dome cameras are housed in a transparent or semitransparent dome, they're less obtrusive than traditional cameras. On mini-dome cameras, the installer can set the camera's position during installation, and can also set the specific field of view with a varifocal lens. Other dome cameras include a pan-tilt unit, which allows you to control the camera's position using a keypad, joystick or computer software.

Not only does WINDS offer a wide variety of cameras, we offer a wide variety of all video surveillance products. From monitors and control keypads to digital video recorders and groundbreaking, WINDS offers everything you need to create a complete video surveillance system. As with our cameras, we design and install every other line of our security products based on customer needs, and using the latest technology.

DIGITAL, VIDEO RECORDERS, MASS STORAGE RECORDERS & ACCESSORIES



Digital recorders work just like a standard security VCR, only better. You'll see sharper, more detailed images, search instantly by date, time, camera or alarm, and never again have to bother with tapes that jam, wear out or need to be stored. Embedded operating system ensures your recorder's working when you need it. Digital recorders use a proprietary, embedded operating system. The result? Your recorder won't be prone to system crashes like PC-based recorders; it will deliver continuous, reliable performance. And the stored video that's so important to protecting your facility is safer from worms and viruses.

Viewing software lets you access your recordings while at home or on the road with reader software, you can connect to any digital recorder in your network to view live or recorded images. Or connect using a modem. Software opens your recorders to users who need access to them, and it enables you to check in on the business while you're at home or on the road. Special interfaces customize your recorder for your application with a dedicated interface, you can use your recorder with ATMs, cash registers and fuel station pumps to capture and associate receipt text with your recordings. Now you can look up clips by transaction number, cashier ID, or text like "void" or "no sale."



REMOTE CCTV SYSTEMS



Just to compete, many businesses like convenience stores and restaurants stay open long hours or round the clock. And that makes it nearly impossible for business owners like you to get away and still mind the store. Even managers at larger companies and organizations need to monitor their facilities while they're gone. But in the past, that has required expensive and complicated solutions. Now, with remote CCTV systems, you can monitor your business any hour-day or night-from the easy chair in your living room or a hotel room on the road.

If you have more than one store or site you want to monitor, you can install a remote CCTV system at each location. And you don't need special phone lines or high-speed internet connections. The remote CCTV system uses standard telephone lines and advanced video compression techniques to transmit up to 15 frames per second of full-motion colour video and audio.

The viewing software uses a standard phone line connected to your PC's modem. So take your laptop with you, and you can monitor your sites from wherever you go. You can view scenes from your cameras, hear audio transmitted from your monitored site, and capture and save images for later viewing, faxing or emailing. Its split-screen display even lets you view captured and live images at the same time.



TIME & ATTENDANCE SYSTEMS



Time and Attendance access control series featuring biometric fingerprint verification sensor and technologies, the devices are used to install on the door entrance with built-in time and attendance management software to better manage multi-access points attendance control and duty roster arrangement.

Time App. is modular application which provides you with real time information about presence and absence for all your employees, with no limits to complexity of your organizational structure, number of employees and separated locations your company might have. Due to different nature of working environments time calculation is based on two separated principles; flexible time calculation and fixed time calculation.



KEY MANAGEMENT SYSTEM



WISIS range of electronic key cabinets control who may take a key, which keys a user may take and automatically record the transaction activity by date and time both on the cabinet and on the support software. This electronic key security makes users accountable for the keys, reducing management risk and improving efficiency.

From Offices, military establishments, police forces, correctional institutions, famous landmarks and even royal households, electronic key control cabinets help ensure that keys are only taken by authorized staff and that every key taken is accounted for. For building management, asset management and fleet management, WISIS offers a huge range of benefits.

GATE BARRIER AND CAR PARK MANAGEMENT SYSTEM

Our range of Gate traffic barriers offer cost-effective and practical traffic management solutions. The range includes simple parking barriers as well as highly automated road with heavy traffic. These automatic road traffic barriers are easy-to-maintain and reliable. These are designed to provide long hours services.

This parking barrier gate operator is a heavy-duty, high performance barrier gate designed to be used in conjunction with other RFID hardware and RFID Parking Control Software in order to provide a complete RFID enabled parking solution.

The parking barrier gate is typically utilized for medium to high traffic volumes and for wide lane management and has the capacity to be used for industrial facilities and to stand up to the harshest weather environments and operating conditions.

WISIS design, complete car park management system with the following modules:



AVAILABLE PARKING SPACES MANAGEMENT ►►

Combined system from hardware components and software that supplies real time information about the parking space, occupied or free, with lots of supporting information, like statistics about parking spaces, history, spaces view and lots more. Our range of electronic key cabinets control who may take a key, which keys a user may take and automatically record the transaction activity by date and time both on the cabinet and on the support software. This electronic key security makes users accountable for the keys, reducing management risk and improving efficiency.

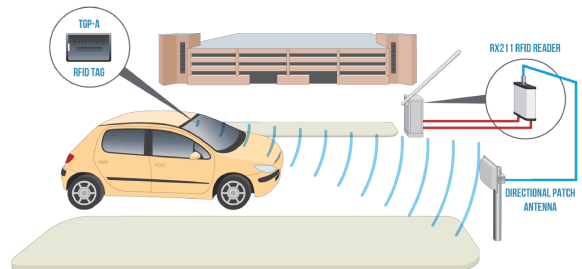
VEHICLE IDENTIFICATION ►►

Advanced module for reading and processing number plates, transferring digital information for payment management.



NUMBER PLATE RECOGNITION FOR ACCESS CONTROL: ►►

Visual recognition technology that allows to detect, locate and identify the vehicle by its number plate, to control and restrict the access by the days or hours of the week.



VEHICLE DATA CAPTURE ►►

Vehicle's and driver's image reading and scanning for storing into identification database for later needs and verifications.



ID CARD PRODUCTION SYSTEM

Create the customized ID badges you need with a professional turn-key photo id card printer system from WISIS. Your personal specifications can be easily met with our time-and-cost-efficient packages which include the highest-quality ID card software, printers and supplies on the market.



Our comprehensive PVC card printer systems provide every item required to get you started producing your own custom photo ID badges.

Our preselected turnkey card printer system packages:

- Single-Sided ID Printer Systems
- Dual-Sided ID Printer Systems



WISIS supplies photo id card printers, id card printer ribbons and all associated accessories. We offer specialist knowledge and experience in all areas of plastic card and print solutions. We supply products to suit all budgets and requirements.

TURNSTILES



WISIS range of internal and external turnstile's are designed and manufactured to the highest quality standards, and have been proven across the World. Select from an extensive range of both half height and full height, internal or external, high throughput or high security turnstiles.

WISIS range of security turnstiles, revolving doors and portals are used in applications including stadiums and arenas, perimeter and interior security, recreation and amusement parks, retail crowd control, transit fare collection and lobby access control.

We believe in first assessing the customer's requirements and then matching a standard or custom product design to meet your needs. The ability to adapt to each individual customer's unique specifications and offer a complete line of physical security solutions for pedestrians and vehicles separates WISIS systems from all other competitors. All products are designed to provide many years of safe, trouble-free performance with no sharp edges or exposed bolts to hinder use. The only maintenance required is occasional lubrication of moving parts.

CHECKPOINT SOLUTIONS

Usually used at the entrance of Building/Hotels to check people. The solutions consists of X-ray Hand Baggage screener and a walk through metal detector. To further increase the security a handheld explosive detector also could be used. Explosive Detectors - For a higher level of security in consulates and high profile building to screen people for explosives.

WISIS provide walk-through, Explosive Detectors and hand-held scanners that are used to safeguard facilities in Pakistan, such as schools, airports, prisons and embassies, and special events, such as athletic competitions, political conventions, concerts, and high-profile ceremonies.



ENTRANCE CHECKPOINT SOLUTION ►►

A combination of Road barriers & Road blockers placed just after/before the main gate of buildings to stop nullify the effects of any vehicle bound terrorist attacks.



PERIMETER DETECTION SYSTEM ►►

Perimeter Detection System is a class of sensors that monitor activity surrounding or on critical infrastructure areas such as NGO's, Sensitive Offices, airports, seaports, military installations, national borders, refineries and other critical industry and the like. Such sensors are characterized by their ability to detect movement at ground level of targets such as an individual walking or crawling towards a facility. Such systems typically have ranges of several hundred meters to over 10 kilometers.

UNDER VEHICLE INSPECTION

CAMERA SYSTEMS ►►

Used worldwide at entrances to VIP Buildings, these systems scan the under carriage of vehicles for contraband goods. The Under-Vehicle Inspection unit provides excellent quality video of the underside of vehicles at remote locations. Within Seconds, the underside of vehicles can be scanned for bombs, attached packages and other paraphernalia.



MIRROR SYSTEM ►►

A large convex mirror with fluorescent lighting mounted on castors for searching the underside of vehicles. The mirror offers a wide field of view and the hinged handle can be lowered to ground level for maximum under vehicle penetration.

MAIL SCANNERS ►►

Electronic Mail Scanners suitable for all offices, hotels and governments. Just launched, the latest multiple application of Portable X-Ray Viewing Systems used by police, military, EOD customs, law enforcement agencies, prisons and building security managers.



BLAST PROOF DOORS AND WINDOWS

We fabricate blast proof doors and windows considering the growing demand for construction of safer establishments. These doors and windows are specially designed to withstand impact of a bomb blasts and protect properties & human beings from damage. Blast proof doors and windows are fabricated using lexgard sheets, margard sheets and laminates which efficiently resist force generated by a strong blast. Due to their safety features, our doors and windows are used to make bank counters, ATMs, defence head quarters and other high security purposes.



INTERCOM SOLUTIONS



There's nothing quite like a video intercom system to add convenience and safety at your front door. You'll be able to see and hear who's at the front door without getting anywhere near it.

AUDIO VISUAL SYSTEMS

WISIS design, supply and install integrated audio visual systems, professional public address systems, multiroom audio / video control systems, video conferencing systems, digital signage systems for implementation in public areas, such as hotels, apartment blocks, villa compounds, mosques, shopping centers & airports.

>Integrated Audio Visual Systems > Digital Signage Systems > Public address systems



VOICE ALARM SOLUTIONS (VA) ►►

- Multiroom Control Systems
- Congress Systems
- Interpretation Systems
- Video Conference Systems
- Video Editing Systems

CORPORATE
GROUP PROFILE

OUR strategic product partners

Microsoft[®]

LINKSYS[®]
A Division of Cisco Systems, Inc.

Alhwa
TECHNOLOGY

 **BOSCH**
Invented for life

 **LifeSize**[®]
A division of Logitech

 **Baynet**

MERCUSYS[®]

 **Symantec**[™]

LINKCOMN

 **ElectroVoice**[®]

lenovo

RANGER

HIKVISION

Honeywell

KASPERSKY[®]

Alcatel-Lucent 

 **Juniper**[®]
NETWORKS

 **POLYCOM**[®]

Systemax[™]

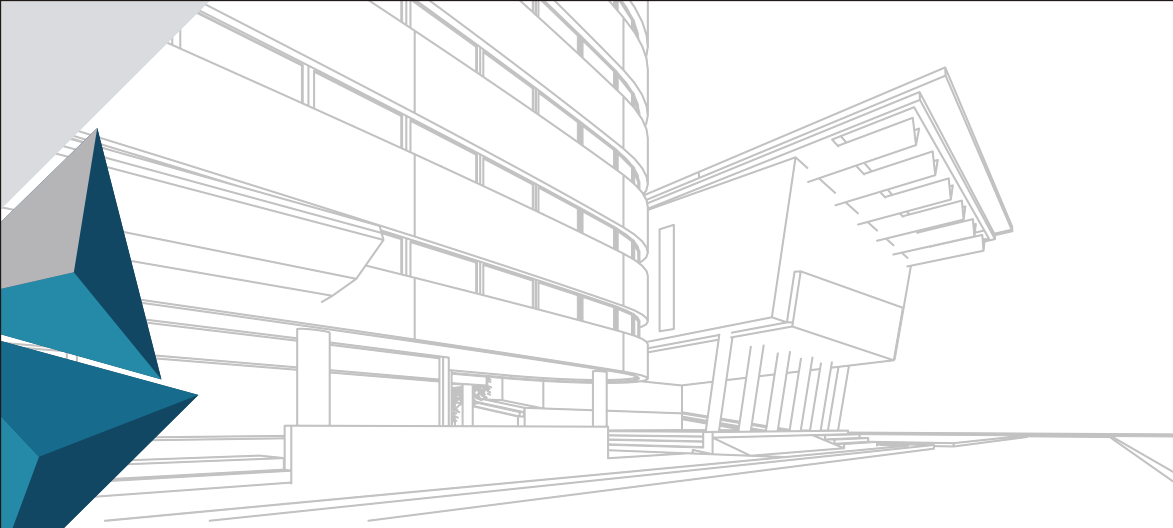
Panasonic
ideas for life

BOSE[®]
Better sound through research[®]

All other / above mentioned products, company names, brand names,
trademarks and logos are the property of their respective owners.




All other / above mentioned products, company names, brand names, trademarks and logos are the property of their respective owners.



The **Single Source** for all
your **Business Needs**

 1st Floor, 41-K-Block, Commercial Area,
Phase-I, DHA Lahore - Pakistan.

 +92-42-35709829

 info@windsinternational.com

 www.windsinternational.com

 /windsintl